

**Kenmore-Town of Tonawanda
Union Free School District
Proposed Budget
2025-2026**



**Budget Vote &
Annual Board of Education Election
May 20, 2025**



#



Kenmore-Town of Tonawanda Union Free School District Proposed Budget 2025-2026



Table of Contents

Voting Information.....	4-9
Three Part Budget.....	10-11
Revenue Budget and Tax Rate.....	12-14
Expenditure Budget.....	15-24
Administrative Compensation Form.....	25
Tax Cap Calculation.....	26
Required Reports.....	27-118

Annual Budget Vote of the
Kenmore-Town of Tonawanda UFSD
And Board of Education Election

Budget Hearing

Tuesday, May 13, 2025

6:00 PM

Kenmore Middle School

Community Room

155 Delaware Road

<https://www.ktufsd.org/boelive>

#

Voting at Hoover Middle School Only

Tuesday, May 20, 2025

Voting Hours: 7:00 AM - 9:00 PM

PROPOSITION NO. 1: 2025-26 BUDGET

RESOLVED, That the basic budget of \$197,904,919 for the Kenmore-Town of Tonawanda Union Free School District for the fiscal year commencing July 1, 2025 and ending June 30, 2026 as presented by the Board of Education, is hereby approved and adopted and the required funds therefore are hereby appropriated and the necessary real property taxes required shall be raised by a tax on the taxable property in the District to be levied and collected as required by law.

PROPOSITION NO. 2: ACQUISITION OF SCHOOL BUSES AND SIMILAR VEHICLES

RESOLVED, that the Board of Education of the Kenmore-Town of Tonawanda Union Free School District, Erie County, New York (the "District"), is hereby authorized to purchase school buses and similar vehicles (and related equipment) for use in the transportation program of the District, at an estimated maximum cost of \$2,125,000, (with such estimated maximum cost reflecting the value of any trade-ins) and to expend therefor an aggregate sum not to exceed \$2,125,000; and be it further

RESOLVED, that the sum of \$2,125,000 (which may include certain up-front financing costs), plus an amount for interest thereon, shall be funded by the levy of a tax upon the taxable property of the District and collected in annual installments as provided by Section 416 of the Education Law; and be it further

RESOLVED, that in anticipation of such tax, bonds or other obligations (including, without limitation, obligations arising under leases, lease/purchase contracts or installment purchase contracts) of the District shall be issued or entered into in accordance with applicable provisions of New York State law; and be it further

RESOLVED, that New York State Transportation Aid funds expected to be received by the District as well as Federal, State, County and/or local funds including, but not limited to rebates are anticipated to offset a substantial part of such costs, and such funds, to the extent received, shall be applied to offset and reduce the amount of taxes herein authorized to be levied.

Candidates for the Board of Education

Vote for one (listed by position on ballot)

Matthew Chimera
Paul Spors

There are two positions to be filled on the Board. The two candidates receiving the largest number of votes each shall be elected for a term that shall begin July 1, 2025 and end June 30, 2028. A brief biography of each candidate appears on the District website.



Where to Vote

Hoover Middle School
249 Thorncliff Road
(use the Sheridan Drive entrance)

- There is only **one** polling site for the vote.
- All voters, no matter what election district they are in, should vote at **Hoover Middle School**.

Voting Hours: 7:00 AM to 9:00 PM
Tuesday, May 20, 2025

Voter Qualifications

- Voters must be a U.S. citizen, 18 years of age or older, and a resident of the district for 30 days prior to the vote.
- Those who are not registered to vote will need to complete an affidavit confirming that they are a qualified voter.
- Photo identification and proof of citizenship, age, and residency are required for those who are not registered.

Absentee or Early Mail in Ballot Information

- Contact the District Clerk at (716) 874-8400 ext. 20342 for an absentee ballot application.
- Those on the permanent absentee or early mail in ballot list do not need to apply for an absentee ballot.
- Applications must be received no later than seven days prior to May 20, 2025.
- Absentee or Mail in ballots must arrive no later than 5 p.m. the day of the vote on **May 20, 2025**.



Note: You do not have to register if you are already registered with the Erie County Board of Elections or have voted in the past four years.

The 2025-26 Budget: A Snapshot

The Board of Education adopted an expenditure plan of \$197,904,919 for the 2025-26 school year at its April 8, 2025 meeting. This represents a budget to budget increase of 3.25% with a projected tax levy and tax rate increase of 2.03%. The Board believes that this budget carries forward quality programs for students in a fiscally responsible manner.

Quality
Education



Fiscal
Responsibility

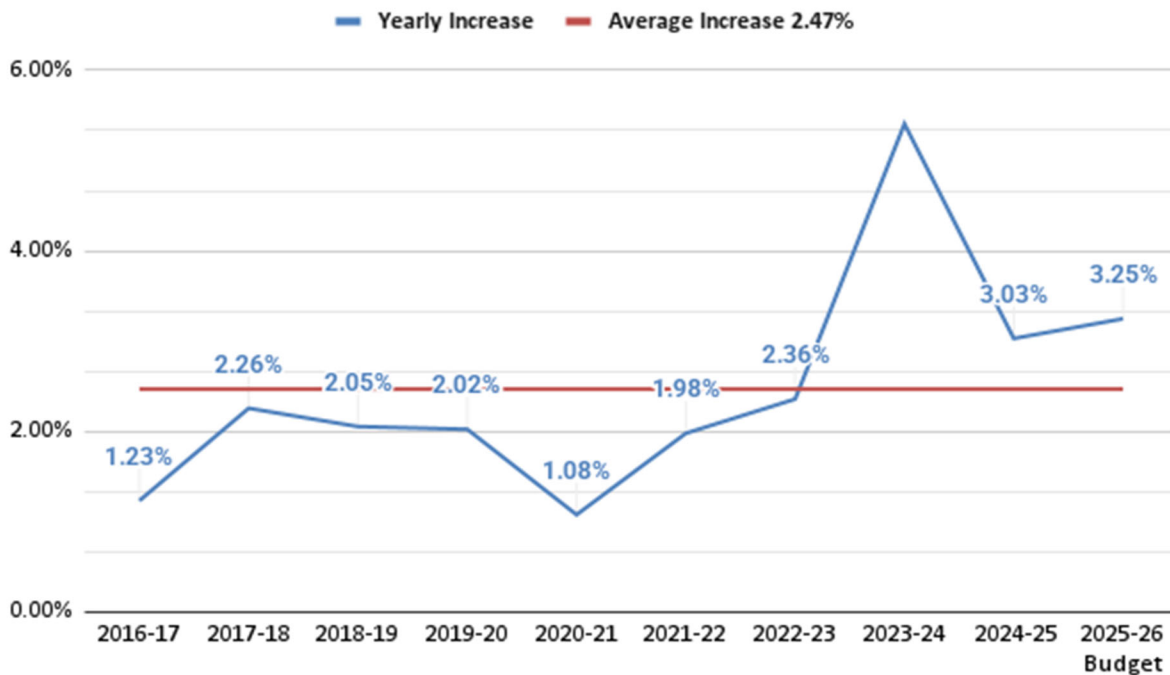
The 2025-26 Budget:

- Increases spending by \$6,226,316 (3.25%) compared to the 2024-25 budget
- Uses \$7.1 million of fund balance and reserves.
- A tax levy increase of 2.03%, under the tax levy limit of 2.16%.
- A continued focus on safety including building and cyber security, both of which are part of the District Strategic Plan.
- Focusing on continuing to develop supports that will increase student achievement in all our schools. This includes introducing a new reading program that will meet New York State's new standards.
- Targeted support will be given to our three NSYED identified TSI schools - Franklin Elementary, Franklin Middle School and Hoover Middle school. These schools will receive targeted support for improvement for low performing sub groups.
- Maintain commitment to STEM through implementation of BOCES 4 Science Curriculum across all elementary grades.
- Additional funding for students with significant disabilities for out of district placements.

Proposed Budget Summary

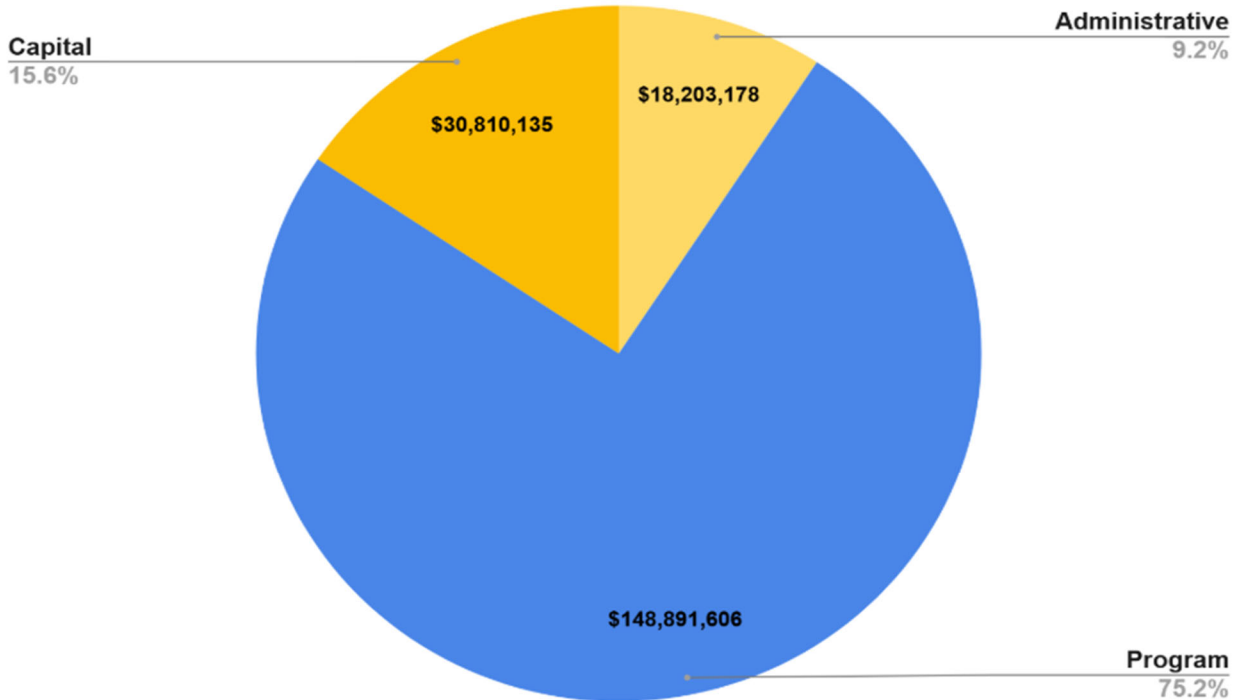
Item	Amount
Proposed 2025-26 Budget	\$197,904,919
Budget Increase	\$6,226,316
Budget to Budget % Increase	3.25%
Proposed Tax Levy % Increase	2.03%
Estimated Tax Rate	\$58.96
Tax Rate Increase **(Estimated)	2.03%
Fund Balance and Reserve Usage	\$7,113,105
Per Month Increase \$100,000 Full Market Assessed Value ESTIMATE	\$9.76
Yearly Increase \$100,000 Full Market Assessed Value ESTIMATE	\$117.14

Historical Budget % Increase



Three-Part Budget

Total Budget: \$197,904,919

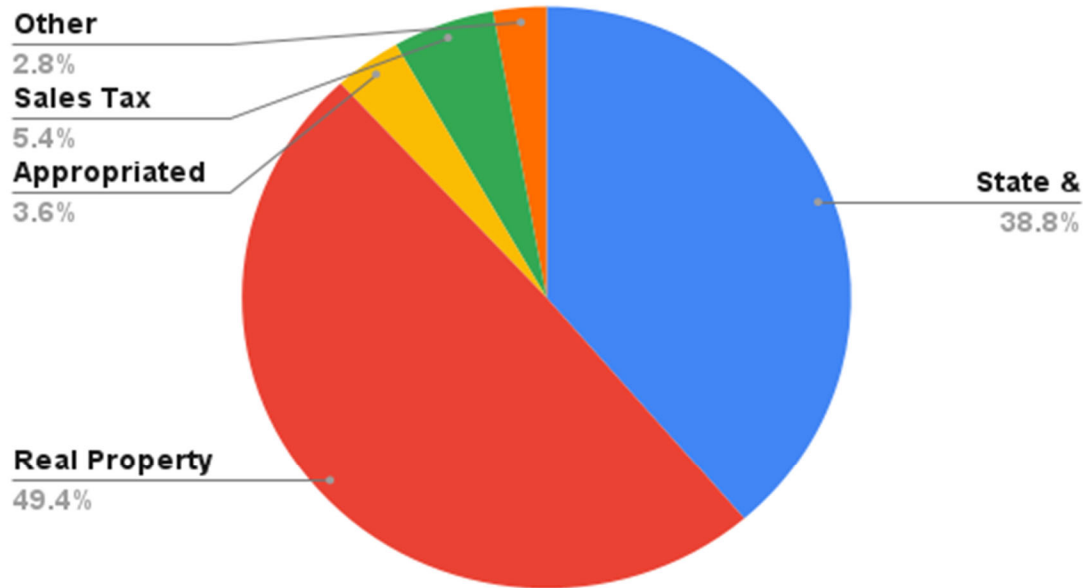


New York State Law requires that the budget be presented in a three-part format: Administrative, Program and Capital. These categories include the following items:

Administrative	Program	Capital
<ul style="list-style-type: none"> Central Administration Business Office Curriculum Development Instructional Administration 	<ul style="list-style-type: none"> Regular School Instruction Special Education Student Services Instructional Media Extracurricular Activities Student Transportation Community Services 	<ul style="list-style-type: none"> Maintenance and Operations Judgements and Claims Refunds of Taxes Debt Service

Three-Part Budget: 2025-26		
Summary of Expenditures	2024-25 Budget	2025-26 Proposed
Administrative		
Superintendent & Board of Education	\$453,767	\$511,271
Business Administration	\$1,038,582	\$1,165,372
Personnel Administration	\$1,574,912	\$1,673,686
Central Services & Other	\$3,693,814	\$3,647,302
Instructional Administration	\$7,717,315	\$7,008,963
Employee Benefits	\$3,936,488	\$4,196,584
Total Administrative	\$18,414,878	\$18,203,178
Program		
Regular School	\$55,493,828	\$55,899,036
Special Education	\$28,279,403	\$30,423,751
Occupational Education	\$5,181,832	\$4,972,286
Special Schools	\$513,463	\$571,261
Library, A-V, & Computer Asst. Instruction	\$3,374,137	\$4,044,867
Guidance, Health, & Psych. Services	\$6,145,363	\$6,179,384
Extracurricular Activities	\$2,096,101	\$1,985,192
Transportation Services	\$6,532,776	\$6,474,710
Other	\$273,245	\$225,932
Employee Benefits	\$36,017,095	\$37,815,187
Interfund Transfers	\$300,000	\$300,000
Total Program	\$144,207,243	\$148,891,606
Capital		
Operations & Maintenance	\$11,009,425	\$11,463,945
Judgements & Tax Refunds	\$65,000	\$65,000
Employee Benefits	\$2,608,359	\$2,851,989
Debt Service	\$15,273,698	\$16,329,201
Interfund Transfers	\$100,000	\$100,000
TOTAL CAPITAL	\$29,056,482	\$30,810,135
TOTAL BUDGET	\$191,678,603	\$197,904,919

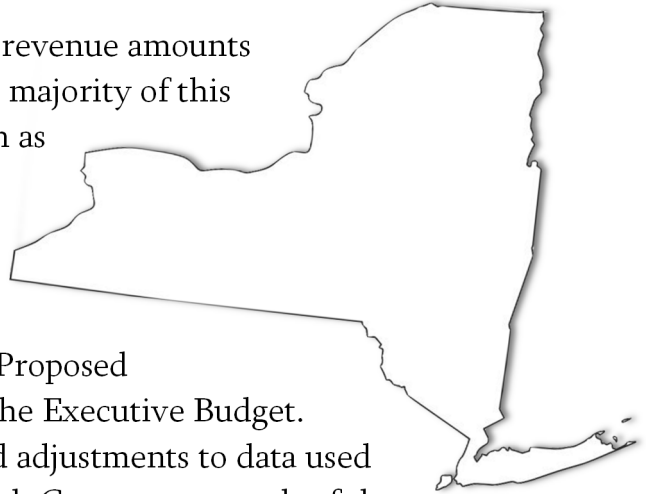
2025-26 Revenue Budget Total Budget \$197,904,919



2025-26 Revenue Comparison			
	2024-25 Budget	2025-26 Proposed	Increase/-Decrease
State & Federal Sources	\$72,086,985	\$76,695,103	\$4,608,118
Real Property Taxes	\$95,859,713	\$97,802,911	\$1,943,198
Appropriated Fund Balance	\$7,438,105	\$7,113,105	-\$325,000
Sales Tax	\$10,700,000	\$10,700,000	\$0
Other	\$5,593,800	\$5,593,800	\$0
Total Revenue	\$191,678,603	\$197,904,919	\$6,226,316
Budget to Budget Percentage Increase:		3.25%	

State Aid

The Ken-Ton UFSD's total state and federal revenue amounts to 38.8% of the overall revenue budget. The majority of this state aid is from a non categorical aid known as "Foundation Aid". Other types of state aid include funding specific to transportation expenses, capital expenses and BOCES expenditures. The Legislative Budget has not been adopted as of April 24, 2025. The Proposed 2025-26 Budget is based on estimates from the Executive Budget. The Executive Budget for State Aid included adjustments to data used for Census and Free and Reduced Price Lunch Counts, as a result of the Rockefeller Report. If the Legislative Budget is approved with less Foundation Aid than expected, a recommendation will be made to the Board of Education to cut expenditures or use appropriated fund balance and reserves to cover those costs.



#

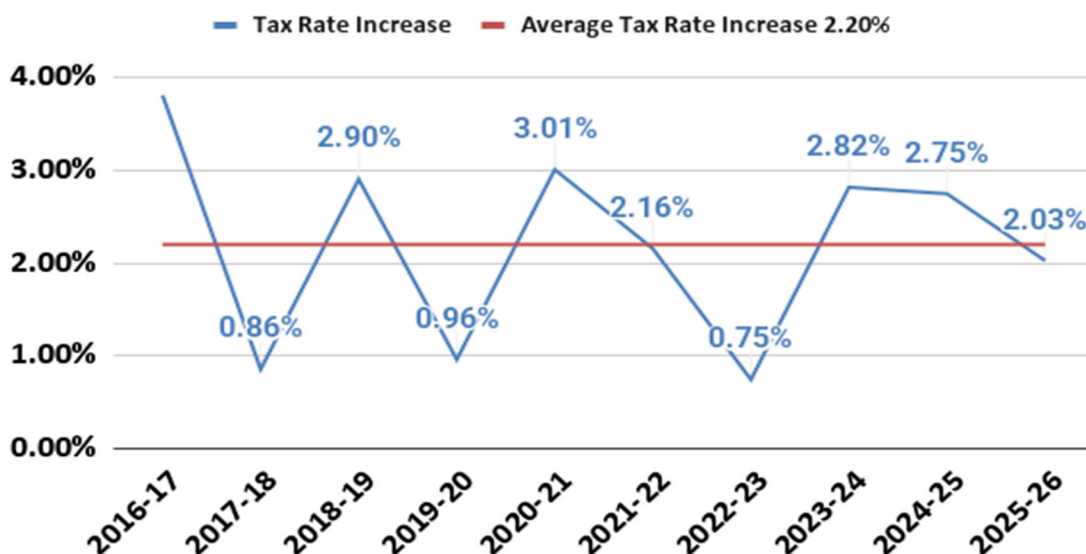


Tax Levy and Tax Rate

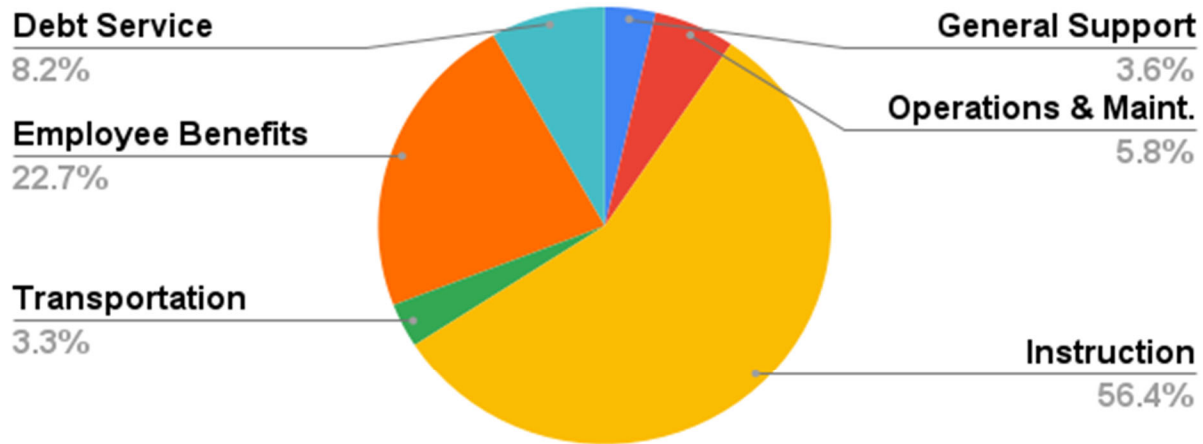
The proposed budget includes a tax levy increase of 2.03% for 2025-26. This is under the calculated State Tax Levy Limit (Tax Cap). The total district assessed value has not been finalized as of yet. Therefore, a final tax rate cannot be calculated. The tax rate projections on this page reflect no change in the assessed value for the District from 2024-25. The tax rate for 2025-26 is projected to be \$58.96 per thousand, a \$1.17 increase over 2024-25. A house that has a market value of \$100,000 is projected to pay about \$117.14 more in 2025-26.

Tax Rate History						
	Actual	Actual	Actual	Actual	Actual	Projected
	2020-21	2021-22	2022-23	2023-24	2024-25	2025-26
Tax Rate*	\$53.15	\$54.30	\$54.70	\$56.24	\$57.79	\$58.96
Tax Rate Increase	\$1.55	\$1.15	\$0.40	\$1.54	\$1.55	\$1.17
Tax Rate % Increase	3.01%	2.16%	0.75%	2.82%	2.75%	2.03%
*Tax Rate is per thousand of assessed value.						

Historical Tax Rate % Increase



2025-26 Proposed Expenditure Budget by Function: \$197,904,919



2025-26 Expenditure Comparison			
	2024-25 Budget	2025-26 Proposed	Increase/-Decrease
General Support	\$6,926,075	\$7,162,631	\$236,556
Operations and Maint.	\$11,009,425	\$11,463,945	\$454,520
Instruction	\$109,374,687	\$111,610,672	\$2,235,985
Transportation	\$6,532,776	\$6,474,710	-\$58,066
Employee Benefits	\$42,561,942	\$44,863,760	\$2,301,818
Debt Service	\$15,273,698	\$16,329,201	\$1,055,503
Total Expenditure	\$191,678,603	\$197,904,919	\$6,226,316
Budget to Budget Percentage Increase:		3.25%	

2025-26 Expenditure Budget

General Support

The general support category of the operating budget covers non-instructional, managerial, and operational functions for the entire school district. This category contains many costs applicable to any large business which makes it possible for the Board of Education and its chief school officer, the Superintendent of Schools, to carry out their responsibilities. Funds for the strictly regulated financial operation for the district are in this area. Also included are the appropriations for the operations and maintenance department, property and liability insurance, personnel, legal affairs, and the Board of Cooperative Educational Services (BOCES) costs.

1010 Board of Education

This section covers all expenses related to the Board of Education, including membership in the New York State and Erie County School Board Associations, and the costs incurred by board member attendance at local, state, and national conferences. The supply category covers the supplies necessary to carry out the Board of Education's business, such as district meeting supplies, minute book binders, board mail-out costs, and associated office expenses. **Please note: Your school board members are not paid for their time or services.**

1040 District Clerk

This portion of the budget covers expenses for the functions of the district clerk's office including legal notices and advertising.

1060 District Meeting

This portion of the budget covers advertising and election staff as well as the supplies needed for the annual meeting.

1240 Chief School Administrator

The Chief School Administrator section includes salaries for the Superintendent and support staff as well as supplies, materials, and contractual expenses associated with the operation of this office. Other expenses include dues, workshops, conferences, equipment repair, law books and subscriptions.

1310 Business Administration

The business office conducts the financial affairs of the district including budgeting, banking, and investing. Included are the salaries of the Assistant Superintendent for Finance and the Accounting/ Purchasing Department. Contractual expenses cover administrative legal services, workshops, conferences, related purchasing expenditures, and maintenance agreements for office equipment. Supplies include computer supplies, purchase orders, forms, software, and other miscellaneous costs. The district subscribes to the State Aid Planning Service through BOCES.

1320 Auditing

The District is required to obtain annual independent audits for its financial statements as well as for its control procedures. The expenses for these audits as well as the independent claims auditor are budgeted in this functional area.

1330 Tax Collection

Annual school taxes are collected by the Town of Tonawanda on behalf of the District. The contracted expenses for this service is budgeted in this area.

1420 Legal Services

This budget function covers expenses associated with legal expenses relating to the management of the District.

1430 Human Resources

This section covers salaries and related expenses for the Assistant Superintendent for Human Resources and the support staff. This budget also includes management and scheduling for substitute staff. Contract negotiations and administration of all personnel matters reside in this department. It also includes the administration of the Flexible Benefit Plan.

1460 Records Management

This budget line has been for various records management expenses. These costs will be absorbed in other budget lines in the future.

1480 Public Information

Public Information Services provides funding for various mailings to the community and the printing and mailing of the Kenmore-Town of Tonawanda UFSD newsletter.

1620 Operation of Plant

The budget in this section is associated with the operations of the District's school buildings. Salaries for building custodians and cleaners are included. Within this category are the costs for utilities, water and sewer, telephone, and refuse removal. The district participates in a BOCES consortium that cooperatively bids the purchase of natural gas. Substantial fuel cost savings are realized through this cooperative effort. Materials and supplies include items such as paper products, trash can liners, vacuum cleaner parts, and cleaning supplies. Many of these items are competitively bid to ensure the best possible price.

1621 Maintenance of Plant

Maintenance expenses include salaries for maintenance personnel, tradesmen, maintenance agreements, asbestos management, chemicals for the swimming pools, electrical repairs, and plumbing repairs. The salary of the district inter-building messenger is also included in this code.

1660 Central Storeroom

The salary costs of the Central Warehouse located in the Administration Building is covered in this section. All deliveries are processed in this central location prior to being distributed to the various buildings.



1670 Central Printing & Mailing

This section includes the costs of paper, postage, in-house printing services, and the central copier contracts. In addition to providing staff, teachers, and students with copy and laminating services, considerable savings are realized through producing in-house forms, stationery, report cards, handbooks, and directories.

1680 Central Data Processing

Costs of maintaining central computer equipment, programs, and services are budgeted here. Included are the programs for district-wide accounting, payroll, personnel, grade reporting, employee attendance, student attendance, and student scheduling. The Wide Area Network management is covered in this portion of the budget. Overall network maintenance and support are also handled through this account.

1900 Special Items

This category groups individual items which are not allocated elsewhere in the general support section. Property and liability insurance, BOCES administration and BOCES capital project costs are included here. Each school district in BOCES pays a proportionate share of all of the costs of operation: salaries, rents, building construction, maintenance, supplies, etc. Expenditures to BOCES are aided by the State in the following year. Tax refunds and bonding costs are also budgeted here.

Instruction

Instruction is the core of the school budget. This general category covers salaries for administrators, teachers, aides, related instructional personnel (such as librarians, guidance counselors, psychologists, social workers and nurses) as well as the materials, supplies, and equipment necessary to support the educational environment. Co-curricular and interscholastic activities are also included in this general area of instruction.

2010 Curriculum Development & Supervision

Curriculum development provides for expenditures necessary to develop, create, and update the curriculum programs that are the backbone of the educational process. Salaries and expenses associated with the position of Assistant Superintendent for Curriculum and Instruction and support staff are included in this code.

2020 Supervision – Regular Schools

The costs identified here include the salaries and related expenses of the school principals, assistant principals, program supervisors, and school office personnel. Other items included are costs associated with office equipment, contractual expenses, equipment maintenance, and supplies.



2040 Supervision – Special Schools

Proposed expenditures include salaries and related expenses of the Director of the Regional Education Center and office staff.

2060 Research, Planning & Evaluation

Salaries and related expenses of teacher mentors, allocations to School Planning Team funds, and Career Option II stipends are included here. The number of mentors varies every year, based on staff.

2070 Inservice Training

Opportunities for both instructional and non- instructional personnel are provided through the Staff Development Center (SDC) and BOCES. Included are the salaries of SDC instructors and staff, teacher substitutes for in-service training, workshop pay, and other costs associated with this function. Because BOCES programs are provided on a shared basis, the district receives a partial State Aid Reimbursement on these expenditures.

2110 Teaching – Regular Schools

The costs in this category include the salaries of regular K-12 teachers, teacher substitutes, classroom aides, and monitors as well as all supplies, textbooks, and equipment associated with the operations of the instructional program in all buildings. Also included are field trip expenses, the Gifted and Talented program, contracts for maintenance of equipment, and BOCES shared services.

Salary codes reflect negotiated salary increases along with funding for remediation efforts, academic intervention services, and additional classroom technology improvements. The projected cost for charter school students is also in this section.

Other expense items are repair of equipment, graduation costs, travel costs, office supplies, paper supplies, and other office-related expenses. The appropriation for textbooks is fully reimbursed through the state in the following fiscal year.



2250 Programs for Students with Disabilities

The programs in this category provide for students with special learning needs. Costs include the salaries for the special education administration, teachers, and aides. Also included are funds for BOCES services, supplies, and contractual expenses. The services provided through BOCES include special education classroom instruction.

2280 Occupational Education

This area of teaching provides students with an opportunity to receive in-house education in business, home and careers, and technology. Students may also attend BOCES classes where a wide variety of job-training opportunities are provided. Salaries and classroom expenses are included.



2330 Teaching – Special Schools

Salaries for community education instructors and summer school programs are budgeted in this area, as well as amounts for advertising and supplies. Many program costs are offset by tuition fees. Also included in this area are classroom expenses for all summer school programs.

2610 School Library and Audiovisual

Included in this area are the salaries for library media specialists, clerks, and technicians. Equipment repair, bookbinding, and travel expenses are also included. A portion of the expenses for library books is reimbursed by the state as library material aid.

2630 Computer Aided Instruction

The proposed expenditures in this area provide equipment, hardware, software, and supplies related to instructional computer usage. The State provides financial assistance toward the purchase of hardware and software. This category of expenses also reflects the costs associated with computer hardware purchased through BOCES.



2805 Attendance

Expenses related to the attendance officer are budgeted in this line.

2810 Guidance

Guidance salaries and related operating expenses are budgeted in this category. Services provided through BOCES also are included.

2815 Health Services

Salaries for health service employees as well as contracts for health services for students are included in this category. Equipment and supplies are also included in this budget area. The school district is legally obligated to provide health services for children residing in the district while attending schools outside the district.



2820 Psychological Services

Included in this area are the salaries of the district psychologists as well as supplies and various expenses.

2825 Social Work Services

Salaries for district social workers are budgeted here.

2850 Co-Curricular Activities

In this area, salaries are provided for school club programs, athletic supervision and intramural athletics. Also included are costs for equipment, officials, and supplies.

2855 Interscholastic Athletics

Proposed program costs provide for sports activities both at home and while visiting other districts. Included are salaries of coaches, assistant coaches and faculty managers, as well as equipment and supplies to provide a variety of activities for students.



Our athletic program includes approximately 180 teams in a variety of sports for boys and girls in grades 6-12. The school district is a member of the Niagara Frontier League and Section 6 of the New York State Public High School Athletic Association. Currently, Kenmore West is classified as a Class "AA" school and Kenmore East as a Class "A" school based on their enrollment. Each year a large percentage of our varsity teams receive state honors for carrying grade-point averages of at least 90%. The budget reflects officials' fees, supervision, supply costs, coaching salaries, and equipment costs.

Transportation

The District provides regular transportation for its students within and outside the district according to state law, regulations, and District policy. Included is transportation for special education programs, interscholastic activities, and field trips for educational programs.

5510 Transportation Services

This category provides funding to transport students under district policy and mandated State Education Department regulations. The District provides transportation for students in grades K-4 who live more than 0.5 miles from their school. In middle school, grades 5-7, the District will provide transportation for students who live more than 0.75 miles from their school. Transportation will be provided for all high school students living more than 1.0 miles from their school. This category also provides transportation services for students with disabilities and students attending a non-public school within a 15-mile limit. The district transports to over eighty school buildings in Erie and Niagara Counties.

Salaries and wages of drivers, bus attendants, mechanics and administrative staff are included in this category. Insurance for buses, as well as parts, tires, repairs, and fuel are also included as part of this budget. The operating costs associated with transportation facility are located in this category. The negative amounts budgeted under athletic trips and field trips are offsets of amounts budgeted elsewhere.

5530 Garage Building

Expenses for the bus garage building are budgeted in this area.



5540 Contract Transportation

This budget area covers expenses associated with transporting some students to sites through a private transportation company.

5550 Public Transportation

This budget area covers expenses associated with transporting some non-public students to their schools on NFTA buses.

Community Services

Costs for community recreation and a biannual census are budgeted in this general category.

7140 Community Recreation

Included in this budget area are the expenses for the Summer Day Camp and the summer music program.

Undistributed Expenses

The undistributed category groups several district-wide costs which are not included in other areas. Employee benefits, debt service and inter-fund transfers are included here.

9000 Employee Benefits

The second largest area of expenditure for the district is employee benefits. It represents nearly 23% of the total budget. This area includes mandated retirement, social security, unemployment insurance, as well as various life, medical and dental insurance programs as negotiated with the various bargaining units in the district.



9700 Debt Service

This item currently represents the total principal and interest payments which will be paid during the next fiscal year for projects that were previously approved by the voters of the district.

9900 Interfund Transfers and Other

Transfers to Capital Fund reflects funds that can be used for small capital projects which will generate increased state aid for eligible items. The transfer to the Special Aid Fund represents the District's share of various costs for our students at State supported schools as well as for summer programs for students with disabilities. For the 2025-26 school year, the District intends to complete a door hardening project at Kenmore East High School as the \$100,000 Capital Outlay Exception Project.

BOCES Expenses

The Board of Cooperative Educational Services (BOCES) appropriations are shown throughout the district's proposed budget. Those costs are shown in the specific area where the service is utilized. School districts choose to contract for BOCES services for educational programs and services when they cannot offer those programs and services more efficiently and/or economically themselves. Often, many of those services are eligible for increased state aid provided to the requesting school district which helps to relieve the burden on the local taxpayer.

School Lunch Fund

The food services operation of our school district is completely self-supporting and receives its funding from the sale of lunches, breakfasts and federal and state lunch reimbursements. No general fund money is used to subsidize the lunch program.

#



#

#

#

Kenmore-Town of Tonawanda UFSD

Administrative Compensation Information

2025-26

Title	Salary	Employee Benefits	Other Remuneration
School District Superintendent			
Superintendent of Schools	\$214,466	\$42,130	\$7,400
Other Supervisory & Administrative Positions			
Assistant Superintendent for Student Services	\$175,343	\$36,211	\$3,400
Assistant Superintendent for Finance	\$175,343	\$56,043	\$3,400
Assistant Superintendent for Human Resources	\$175,343	\$36,211	\$3,400
Assistant Superintendent for Curriculum	\$175,343	\$61,870	\$3,400

*This report reflects all salaries for the superintendent, assistant superintendents, and any administrators whose salary exceeds \$174,000 and is presented in the format prescribed by the New York State Education Department.

Kenmore-Town of Tonawanda UFSD

Tax Levy Threshold Calculation – OSC

A.	Total Real Property Tax Levy for Base Year	\$95,859,713
B.	Tax Base Growth Factor (minimum of 1.0)	1.0012
C.	Product of A * B	\$95,974,745
D.	Base Year PILOTS	\$790,000
E.	Sum of C + D	\$96,764,745
F.	Base Year Capital Tax Levy	\$3,089,739
G.	Difference of E - F	\$93,675,006
H.	Allowable Levy Growth Factor based on CPI	1.0200
I.	Product of G * H	\$95,548,506
J.	Budget Year PILOTS	\$775,000
K.	Difference of I - J	\$94,773,506
L.	Equals Tax Levy Limit Base or Before Exclusions	\$94,773,506
M.	Budget Year Torts and Judgements above 5% of Levy	\$0
N.	Budget Year Capital Tax Levy	\$3,152,157
O.	Budget Year Pension Expense above 2% increase in rate	\$0
	Eligible Prior Year Carryover	\$0
P.	Tax Levy Limit Adjusted for Transfers + Exclusions (Sum L-O)	\$97,925,663
	Total Tax Levy Limit Percentage Increase	2.16%
	Proposed 2025-26 Tax Levy Increase %	2.03%
	Proposed 2025-26 Tax Levy Increase \$	\$1,943,198
	Proposed 2025-26 Tax Levy	\$97,802,911

Required Reports

4/24/25, 2:05 PM

2024 | NY STATE - Report Card | NYSED Data Site

NY STATE - NEW YORK STATE REPORT CARD [2023 - 24]

The New York State Report Card is an important part of the Board of Regents' effort to create educational equity and raise learning standards for all students. Knowledge gained from the report card on a school's or district's strengths and weaknesses can be used to improve instruction and services to students. The report card provides information to the public on school/district staff, students, and measures of school and district performance as required by the Every Student Succeeds Act (ESSA). Fundamentally, ESSA is about creating a set of interlocking strategies to promote educational equity by providing support to districts and schools as they work to ensure that every student succeeds. New York State is committed to ensuring that all students succeed and thrive in school no matter who they are, where they live, where they go to school, or where they come from.

NYS DISTRICT AND SCHOOL ACCOUNTABILITY STATUSES

The link below provides a list of all NYS district and school statuses and support models, as well as subgroup statuses and support models, for the 2024-25 school year.

NYS District and School Accountability Statuses and Support Models (Excel, 770.79 kilobytes)

SECTION 1003 SCHOOL IMPROVEMENT FUNDS (2023-24)

The link below provides a list of all Local Education Agencies and public schools that received Section 1003 school improvement funds, including the amount of funds each school received and the types of strategies implemented in each school with such funds.

Section 1003 School Improvement Funds Data (74.01 kilobytes)

For information on the use of Title I School Improvement funds, see:

- 2023-24 Title I School Improvement Grant 1003 (Basic)
- 2023-24 Title I School Improvement Grant 1003 Coaching for Excellence Grant
- 2023-24 Title I School Improvement Grant 1003 High School Redesign (HSR) Continuation Grant
- 2023-24 Title I School Improvement Grant 1003 Targeted Support for Long-term Identified Schools Grant
- 2024 Title I School Improvement Grant 1003 (Planning)
- 2024 Title I School Improvement Grant 1003 Supplemental Support
- 2024 Title I School Improvement Grant 1003 Resource Allocation Review (RAR) Pilot
- 2020-24 NYSIP-PLC Phase III

https://data.nysed.gov/essa.php?instid=800000081568&year=2024&createreport=1&StateStatus=1§ion_1003=1&stateProgress=1&EMCore=1&... 1/90

NYS MEASURES OF INTERIM PROGRESS (MIP) AND LONG-TERM GOALS (2023-24)

ELEMENTARY/MIDDLE WEIGHTED AVERAGE PERFORMANCE

Subgroup	Subject	2023-24 Index	2023-24 State MIP	2023-24 State Long Term Goal
All Students	ELA	118.2	113.0	121.6
	Mathematics	130.3	115.3	123.5
American Indian or Alaska Native	ELA	115.8	110.1	118.5
	Mathematics	122.9	108.0	116.6
Asian or Native Hawaiian/Other Pacific Islander	ELA	172.5	160.8	164.4
	Mathematics	192.6	176.3	178.7
Black or African American	ELA	108.1	107.1	116.1
	Mathematics	110.0	97.8	107.4
Hispanic or Latino	ELA	99.0	104.6	113.4
	Mathematics	107.8	101.1	110.5
Multiracial	ELA	124.9	110.5	118.7
	Mathematics	133.3	111.9	120.3
White	ELA	121.5	110.6	119.4
	Mathematics	137.9	118.0	125.8
English Language Learner	ELA	80.6	78.2	89.8
	Mathematics	106.7	93.2	103.2
Students with Disabilities	ELA	61.4	72.7	84.5
	Mathematics	71.3	72.7	84.5
Economically Disadvantaged	ELA	103.1	104.5	113.3
	Mathematics	113.1	103.2	112.4

SECONDARY WEIGHTED AVERAGE PERFORMANCE

Subgroup	Subject	2023-24 Index	2023-24 State MIP	2023-24 State Long Term Goal
All Students	ELA	164.8	192.7	193.6
	Mathematics	85.2	155.4	157.6
American Indian or Alaska Native	ELA	142.8	174.1	175.9
	Mathematics	61.4	137.1	140.1
Asian or Native Hawaiian/Other Pacific Islander	ELA	198.4	209.6	209.7
	Mathematics	142.9	192.2	192.5
Black or African American	ELA	126.4	167.3	169.5
	Mathematics	40.2	123.7	127.4
Hispanic or Latino	ELA	137.6	169.7	172.0
	Mathematics	51.3	130.6	133.9
Multiracial	ELA	172.5	199.8	200.6
	Mathematics	89.4	156.8	158.7
White	ELA	188.6	208.7	209.0
	Mathematics	109.0	170.6	172.0
English Language Learner	ELA	68.3	103.6	108.9
	Mathematics	43.2	107.3	111.8
Students with Disabilities	ELA	94.8	128.6	132.8
	Mathematics	37.0	100.4	105.0
Economically Disadvantaged	ELA	139.4	174.5	176.5
	Mathematics	59.8	136.9	139.9

SECONDARY GRADUATION RATE

Subgroup	Cohort	2023-24 Graduation Rate	2023-24 State MIP	2023-24 State Long Term Goal
All Students	4-year	86.6	83.8	85.0
	5-year	89.2	86.0	86.8
	6-year	89.6	86.1	87.3
American Indian or Alaska Native	4-year	81.9	71.9	74.1
	5-year	85.9	76.9	78.7
	6-year	86.4	74.4	76.4
Asian or Native Hawaiian/Other Pacific Islander	4-year	92.8	88.9	89.5
	5-year	94.5	90.8	91.0
	6-year	94.3	90.3	91.1
Black or African American	4-year	81.5	75.1	77.3
	5-year	85.6	78.3	80.3
	6-year	85.5	78.7	80.3
Hispanic or Latino	4-year	80.7	75.2	76.8
	5-year	84.1	77.5	79.1
	6-year	84.8	77.9	79.7
Multiracial	4-year	84.5	84.7	85.7
	5-year	88.6	86.0	86.8
	6-year	89.6	84.5	85.7
White	4-year	91.1	90.6	91.0
	5-year	92.6	91.9	92.3
	6-year	93.0	91.6	92.4
English Language Learner	4-year	68.1	56.6	60.4
	5-year	74.6	63.4	66.8
	6-year	76.4	63.8	66.8
Students with Disabilities	4-year	69.3	62.7	66.1
	5-year	73.9	65.8	69.0
	6-year	73.4	64.4	67.8
Economically Disadvantaged	4-year	82.2	78.5	79.9
	5-year	85.4	81.8	83.0
	6-year	85.9	82.1	83.5

ENGLISH LANGUAGE PROFICIENCY

Subgroup	2023-24 Percent Made Progress	2023-24 State MIP	2023-24 State Long Term Goal
English Language Learner	33.5	51.0	53.0

ELEMENTARY/MIDDLE CORE SUBJECT PERFORMANCE

Subgroup	Subject	Cohort	Index
All Students	ELA	917,126	129.7
	Math	927,539	142.8
	Combined	1,844,665	136.3
American Indian or Alaska Native	ELA	7,165	121.4
	Math	7,164	129.6
	Combined	14,329	125.5
Asian or Native Hawaiian/Other Pacific Islander	ELA	103,850	172.8
	Math	106,555	192.6
	Combined	210,405	182.9
Black or African American	ELA	143,970	113.4
	Math	143,692	116.3
	Combined	287,662	114.8
Hispanic or Latino	ELA	272,715	107.7
	Math	277,263	117.7
	Combined	549,978	112.7
Multiracial	ELA	32,935	136
	Math	32,708	146.2
	Combined	65,643	141.1
White	ELA	356,491	140.1
	Math	360,157	157.8
	Combined	716,648	149
English Language Learner	ELA	133,328	84.1
	Math	142,781	111.4
	Combined	276,109	98.2
Students with Disabilities	ELA	176,696	73.3
	Math	174,707	86
	Combined	351,403	79.6
Economically Disadvantaged	ELA	548,208	110.2
	Math	551,685	121.8
	Combined	1,099,893	116

https://data.nysed.gov/essa.php?instid=800000081568&year=2024&createreport=1&StateStatus=1§ion_1003=1&stateProgress=1&EMCore=1&... 5/90

ELEMENTARY/MIDDLE WEIGHTED AVERAGE PERFORMANCE

Subgroup	Subject	Cohort	Index
All Students	ELA	1,005,993	118.2
	Math	1,015,973	130.3
	Combined	2,021,966	124.3
American Indian or Alaska Native	ELA	7,510	115.8
	Math	7,558	122.9
	Combined	15,068	119.4
Asian or Native Hawaiian/Other Pacific Islander	ELA	104,050	172.5
	Math	106,555	192.6
	Combined	210,605	182.7
Black or African American	ELA	151,016	108.1
	Math	152,024	110
	Combined	303,040	109
Hispanic or Latino	ELA	296,512	99
	Math	302,707	107.8
	Combined	599,219	103.5
Multiracial	ELA	35,863	124.9
	Math	35,878	133.3
	Combined	71,741	129.1
White	ELA	411,042	121.5
	Math	411,988	137.9
	Combined	823,030	129.7
English Language Learner	ELA	139,200	80.6
	Math	149,118	106.7
	Combined	288,318	94.1
Students with Disabilities	ELA	210,683	61.4
	Math	210,614	71.3
	Combined	421,297	66.4
Economically Disadvantaged	ELA	586,017	103.1
	Math	594,178	113.1
	Combined	1,180,195	108.1

ELEMENTARY/MIDDLE ELP

Subgroup	Number Of ELLs	Benchmark	Progress Rate	Success Ratio
All Students	140,719	47%	48%	1.0
American Indian or Alaska Native	574	48%	52%	1.1
Asian or Native Hawaiian/Other Pacific Islander	23,391	49%	58%	1.2
Black or African American	6,003	46%	49%	1.1
Hispanic or Latino	96,783	46%	44%	1.0
Multiracial	547	50%	56%	1.1
White	13,421	49%	59%	1.2
English Language Learner	140,719	47%	48%	1.0
Students with Disabilities	30,464	42%	33%	0.8
Economically Disadvantaged	123,983	46%	47%	1.0

ELEMENTARY/MIDDLE CHRONIC ABSENTEEISM

Subgroup	Students Enrolled	Students Chronically Absent	Chronic Absenteeism Rate
All Students	1,478,504	370,476	25.1%
American Indian or Alaska Native	10,963	4,000	36.5%
Asian or Native Hawaiian/Other Pacific Islander	156,615	24,206	15.5%
Black or African American	214,259	77,563	36.2%
Hispanic or Latino	453,198	150,319	33.2%
Multiracial	54,154	14,014	25.9%
White	589,315	100,374	17%
English Language Learner	254,174	76,548	30.1%
Students with Disabilities	276,992	87,459	31.6%
Economically Disadvantaged	880,294	297,698	33.8%

Data were not reported for one or more schools within the state. Caution should be used when interpreting results.

ELEMENTARY/MIDDLE ELA PARTICIPATION RATE

Subgroup	Tested 95% In Current Year	Current Year Enrollment	Current Year Participation Rate
All Students	X	1,113,231	86.8%
American Indian or Alaska Native	X	8,367	90.7%
Asian or Native Hawaiian/Other Pacific Islander	✓	116,458	94.8%
Black or African American	X	168,821	90.5%
Hispanic or Latino	X	338,668	87.8%
Multiracial	X	38,955	87.2%
White	X	441,962	82.5%
English Language Learner	X	122,609	90.8%
Students with Disabilities	X	223,235	79.6%
Economically Disadvantaged	X	657,082	89.1%

ELEMENTARY/MIDDLE MATHEMATICS PARTICIPATION RATE

Subgroup	Tested 95% In Current Year	Current Year Enrollment	Current Year Participation Rate
All Students	X	1,113,397	86.7%
American Indian or Alaska Native	X	8,356	89.9%
Asian or Native Hawaiian/Other Pacific Islander	✓	116,400	95.5%
Black or African American	X	169,234	89.6%
Hispanic or Latino	X	338,637	86.9%
Multiracial	X	38,961	86.6%
White	X	441,809	83.1%
English Language Learner	X	122,392	89.2%
Students with Disabilities	X	222,973	78.6%
Economically Disadvantaged	X	656,843	88.1%

NYSESLAT USED FOR PARTICIPATION

Grade	Number Taking NYSESLAT
Grade 3	4,204
Grade 4	4,140
Grade 5	3,947
Grade 6	4,066
Grade 7	3,884
Grade 8	3,726

SECONDARY CORE SUBJECT PERFORMANCE

Subgroup	Subject	Cohort	Index	Combined Index
All Students	ELA	176,239	171.8	141.8
	Math	151,198	100.4	
	Science	149,389	159	
American Indian or Alaska Native	ELA	1,142	151	115.6
	Math	1,017	71.5	
	Science	965	128.7	
Asian or Native Hawaiian/Other Pacific Islander	ELA	19,082	201.8	178.5
	Math	17,918	152.1	
	Science	17,396	183.3	
Black or African American	ELA	26,553	138.3	98.4
	Math	21,488	51.9	
	Science	20,057	108.4	
Hispanic or Latino	ELA	48,734	146	109.5
	Math	39,683	63.6	
	Science	37,970	123.6	
Multiracial	ELA	4,410	180	150.6
	Math	3,725	107.2	
	Science	3,738	171.4	
White	ELA	76,318	192.3	165.2
	Math	67,367	123.9	
	Science	69,263	186.6	
English Language Learner	ELA	13,803	73.9	72.8
	Math	11,546	53.4	
	Science	10,668	100.3	
Students with Disabilities	ELA	29,141	103.4	83.9
	Math	22,737	49.7	
	Science	22,290	105.9	
Economically Disadvantaged	ELA	93,577	148	116.1
	Math	77,781	73.5	
	Science	74,959	132.1	

https://data.nysed.gov/essa.php?instid=800000081568&year=2024&createreport=1&StateStatus=1§ion_1003=1&stateProgress=1&EMCore=1&... 9/90

SECONDARY WEIGHTED AVERAGE PERFORMANCE

Subgroup	Subject	Cohort	Index	Combined Index
All Students	ELA	183,800	164.8	127.1
	Math	178,271	85.2	
	Science	178,194	133.3	
American Indian or Alaska Native	ELA	1,207	142.8	103
	Math	1,185	61.4	
	Science	1,177	105.5	
Asian or Native Hawaiian/Other Pacific Islander	ELA	19,408	198.4	169.8
	Math	19,065	142.9	
	Science	19,061	167.3	
Black or African American	ELA	29,056	126.4	82.2
	Math	27,743	40.2	
	Science	27,602	78.8	
Hispanic or Latino	ELA	51,728	137.6	94.8
	Math	49,274	51.3	
	Science	48,875	96	
Multiracial	ELA	4,602	172.5	133.8
	Math	4,468	89.4	
	Science	4,504	142.3	
White	ELA	77,799	188.6	153.6
	Math	76,536	109	
	Science	76,975	167.9	
English Language Learner	ELA	14,932	68.3	61.1
	Math	14,276	43.2	
	Science	13,843	77.3	
Students with Disabilities	ELA	31,784	94.8	68.7
	Math	30,558	37	
	Science	30,627	77.1	
Economically Disadvantaged	ELA	99,283	139.4	100.8
	Math	95,522	59.8	
	Science	95,007	104.2	

SECONDARY GRADUATION RATE

Subgroup	Cohort	Number In Cohort	Number Graduated	Grad Rate	Average Grad Rate
All Students	4-year	199,656	172,834	86.6%	88.5%
	5-year	201,714	179,984	89.2%	
	6-year	205,463	184,188	89.6%	
American Indian or Alaska Native	4-year	1,468	1,202	81.9%	84.7%
	5-year	1,609	1,382	85.9%	
	6-year	1,469	1,269	86.4%	
Asian or Native Hawaiian/Other Pacific Islander	4-year	20,177	18,721	92.8%	93.9%
	5-year	20,340	19,225	94.5%	
	6-year	20,342	19,180	94.3%	
Black or African American	4-year	32,975	26,883	81.5%	84.2%
	5-year	33,335	28,523	85.6%	
	6-year	34,503	29,491	85.5%	
Hispanic or Latino	4-year	56,167	45,351	80.7%	83.2%
	5-year	53,844	45,264	84.1%	
	6-year	53,448	45,350	84.8%	
Multiracial	4-year	4,584	3,872	84.5%	87.6%
	5-year	4,378	3,877	88.6%	
	6-year	3,944	3,535	89.6%	
White	4-year	84,285	76,805	91.1%	92.2%
	5-year	88,208	81,713	92.6%	
	6-year	91,757	85,363	93%	
English Language Learner	4-year	19,808	13,497	68.1%	73%
	5-year	20,224	15,085	74.6%	
	6-year	19,538	14,928	76.4%	
Students with Disabilities	4-year	36,126	25,025	69.3%	72.2%
	5-year	35,098	25,947	73.9%	
	6-year	35,309	25,911	73.4%	
Economically Disadvantaged	4-year	108,938	89,555	82.2%	84.5%
	5-year	104,356	89,095	85.4%	
	6-year	106,705	91,671	85.9%	

SECONDARY ELP

Subgroup	Number Of ELLs	Benchmark	Progress Rate	Success Ratio
All Students	45,710	41%	40%	1.0
American Indian or Alaska Native	171	44%	40%	0.9
Asian or Native Hawaiian/Other Pacific Islander	5,537	41%	42%	1.0
Black or African American	2,921	42%	44%	1.1
Hispanic or Latino	33,154	40%	38%	1.0
Multiracial	320	52%	59%	1.1
White	3,607	42%	47%	1.1
English Language Learner	45,710	41%	40%	1.0
Students with Disabilities	10,065	30%	22%	0.7
Economically Disadvantaged	39,251	40%	39%	1.0

SECONDARY CHRONIC ABSENTEEISM

Subgroup	Students Enrolled	Students Chronically Absent	Chronic Absenteeism Rate
All Students	807,606	254,697	31.5%
American Indian or Alaska Native	5,483	2,338	42.6%
Asian or Native Hawaiian/Other Pacific Islander	83,229	16,233	19.5%
Black or African American	132,370	55,921	42.2%
Hispanic or Latino	249,161	100,620	40.4%
Multiracial	24,230	7,754	32%
White	313,133	71,831	22.9%
English Language Learner	104,689	43,616	41.7%
Students with Disabilities	140,836	58,608	41.6%
Economically Disadvantaged	473,091	193,520	40.9%

Data were not reported for one or more schools within the state. Caution should be used when interpreting results.

SECONDARY ELA PARTICIPATION RATE

Subgroup	Tested 95% In Current Year	Current Year 12th Grade Enrollment	Current Year Participation Rate
All Students	✓	189,747	96.2%
American Indian or Alaska Native	✗	1,297	94.4%
Asian or Native Hawaiian/Other Pacific Islander	✓	19,943	97.6%
Black or African American	✗	30,834	91.6%
Hispanic or Latino	✓	54,718	94.7%
Multiracial	✓	4,725	97.1%
White	✓	78,230	98.8%
English Language Learner	✗	10,903	92.1%
Students with Disabilities	✗	29,557	92.9%
Economically Disadvantaged	✓	102,582	95%

SECONDARY MATHEMATICS PARTICIPATION RATE

Subgroup	Tested 95% In Current Year	Current Year 12th Grade Enrollment	Current Year Participation Rate
All Students	✗	182,912	84.7%
American Indian or Alaska Native	✗	1,262	86.6%
Asian or Native Hawaiian/Other Pacific Islander	✗	19,551	93.7%
Black or African American	✗	29,189	77.2%
Hispanic or Latino	✗	51,718	80.8%
Multiracial	✗	4,547	83.6%
White	✗	76,645	88%
English Language Learner	✗	10,316	80.8%
Students with Disabilities	✗	28,072	73.6%
Economically Disadvantaged	✗	97,986	81.7%

GRADES 3-8 ENGLISH LANGUAGE ARTS RESULTS (2023-24)

SUMMARY RESULTS



Grade	Total	Not Tested		Tested		Level 1		Level 2		Level 3		Level 4		Proficient (Levels 3 & 4)	
	#	#	%	#	%	#	%	#	%	#	%	#	%	#	%
Grade 3	181,924	24,777	14%	157,147	86%	46,444	30%	43,762	28%	45,704	29%	21,237	14%	66,941	43%
Grade 4	185,505	27,009	15%	158,496	85%	42,424	27%	41,500	26%	45,965	29%	28,607	18%	74,572	47%
Grade 5	186,366	29,258	16%	157,108	84%	45,699	29%	42,785	27%	48,097	31%	20,527	13%	68,624	44%
Grade 6	189,385	32,074	17%	157,311	83%	45,649	29%	43,015	27%	44,472	28%	24,175	15%	68,647	44%
Grade 7	191,183	37,463	20%	153,720	80%	36,836	24%	40,697	26%	48,472	32%	27,715	18%	76,187	50%
Grade 8	194,477	47,960	25%	146,517	75%	33,453	23%	37,054	25%	41,625	28%	34,385	23%	76,010	52%
Grades 3-8	1,128,840	198,541	18%	930,299	82%	250,505	27%	248,813	27%	274,335	29%	156,646	17%	430,981	46%

https://data.nysed.gov/essa.php?instid=800000081568&year=2024&createreport=1&StateStatus=1§ion_1003=1&stateProgress=1&EMCore=1... 14/90

GRADE 3 ELA RESULTS



Subgroup	Total	Not Tested		Tested		Level 1		Level 2		Level 3		Level 4		Proficient (Levels 3 & 4)	
	#	#	%	#	%	#	%	#	%	#	%	#	%	#	%
All Students	181,924	24,777	14%	157,147	86%	46,444	30%	43,762	28%	45,704	29%	21,237	14%	66,941	43%
Female	88,547	10,809	12%	77,738	88%	20,867	27%	21,529	28%	23,571	30%	11,771	15%	35,342	45%
Male	93,347	13,959	15%	79,388	85%	25,572	32%	22,230	28%	22,126	28%	9,460	12%	31,586	40%
Non-Binary	30	9	30%	21	70%	5	24%	3	14%	7	33%	6	29%	13	62%
General Education Students	144,251	14,664	10%	129,587	90%	30,816	24%	36,555	28%	41,937	32%	20,279	16%	62,216	48%
Students with Disabilities	37,673	10,113	27%	27,560	73%	15,628	57%	7,207	26%	3,767	14%	958	3%	4,725	17%
American Indian or Alaska Native	1,452	157	11%	1,295	89%	414	32%	382	29%	351	27%	148	11%	499	39%
Asian or Native Hawaiian/Other Pacific Islander	19,439	2,141	11%	17,298	89%	2,890	17%	3,941	23%	5,934	34%	4,533	26%	10,467	61%
Black or African American	26,565	3,408	13%	23,157	87%	8,443	36%	6,529	28%	5,957	26%	2,228	10%	8,185	35%
Hispanic or Latino	55,857	9,810	18%	46,047	82%	18,039	39%	13,469	29%	10,842	24%	3,697	8%	14,539	32%
White	71,889	8,670	12%	63,219	88%	14,949	24%	17,942	28%	20,799	33%	9,529	15%	30,328	48%
Multiracial	6,722	591	9%	6,131	91%	1,709	28%	1,499	24%	1,821	30%	1,102	18%	2,923	48%
Economically Disadvantaged	107,926	15,164	14%	92,762	86%	35,634	38%	27,108	29%	22,238	24%	7,782	8%	30,020	32%
Not Economically Disadvantaged	73,998	9,613	13%	64,385	87%	10,810	17%	16,654	26%	23,466	36%	13,455	21%	36,921	57%
English Language Learner	25,241	7,211	29%	18,030	71%	10,805	60%	4,938	27%	2,001	11%	286	2%	2,287	13%
Non-English Language Learner	156,683	17,566	11%	139,117	89%	35,639	26%	38,824	28%	43,703	31%	20,951	15%	64,654	46%
In Foster Care	681	110	16%	571	84%	294	51%	163	29%	104	18%	10	2%	114	20%
Not in Foster Care	181,243	24,667	14%	156,576	86%	46,150	29%	43,599	28%	45,600	29%	21,227	14%	66,827	43%
Homeless	11,665	3,519	30%	8,146	70%	4,002	49%	2,073	25%	1,591	20%	480	6%	2,071	25%
Not Homeless	170,259	21,258	12%	149,001	88%	42,442	28%	41,689	28%	44,113	30%	20,757	14%	64,870	44%
Migrant	190	50	26%	140	74%	88	63%	34	24%	17	12%	1	1%	18	13%
Not Migrant	181,734	24,727	14%	157,007	86%	46,356	30%	43,728	28%	45,687	29%	21,236	14%	66,923	43%
Parent in Armed Forces	719	75	10%	644	90%	169	26%	200	31%	196	30%	79	12%	275	43%
Parent Not in Armed Forces	181,205	24,702	14%	156,503	86%	46,275	30%	43,562	28%	45,508	29%	21,158	14%	66,666	43%

GRADE 4 ELA RESULTS



Subgroup	Total	Not Tested		Tested		Level 1		Level 2		Level 3		Level 4		Proficient (Levels 3 & 4)	
	#	#	%	#	%	#	%	#	%	#	%	#	%	#	%
All Students	185,505	27,009	15%	158,496	85%	42,424	27%	41,500	26%	45,965	29%	28,607	18%	74,572	47%
Female	90,776	12,335	14%	78,441	86%	18,621	24%	19,816	25%	23,689	30%	16,315	21%	40,004	51%
Male	94,719	14,672	15%	80,047	85%	23,802	30%	21,684	27%	22,273	28%	12,288	15%	34,561	43%
Non-Binary	10	2	20%	8	80%	1	13%	0	0%	3	38%	4	50%	7	88%
General Education Students	147,044	16,722	11%	130,322	89%	26,604	20%	34,252	26%	42,086	32%	27,380	21%	69,466	53%
Students with Disabilities	38,461	10,287	27%	28,174	73%	15,820	56%	7,248	26%	3,879	14%	1,227	4%	5,106	18%
American Indian or Alaska Native	1,366	171	13%	1,195	87%	337	28%	353	30%	321	27%	184	15%	505	42%
Asian or Native Hawaiian/Other Pacific Islander	19,801	1,946	10%	17,855	90%	2,438	14%	3,434	19%	5,895	33%	6,088	34%	11,983	67%
Black or African American	27,480	3,445	13%	24,035	87%	8,091	34%	6,466	27%	6,329	26%	3,149	13%	9,478	39%
Hispanic or Latino	56,298	9,974	18%	46,324	82%	16,392	35%	12,897	28%	11,575	25%	5,460	12%	17,035	37%
White	73,675	10,750	15%	62,925	85%	13,623	22%	16,839	27%	20,133	32%	12,330	20%	32,463	52%
Multiracial	6,885	723	11%	6,162	89%	1,543	25%	1,511	25%	1,712	28%	1,396	23%	3,108	50%
Economically Disadvantaged	109,427	15,685	14%	93,742	86%	33,126	35%	26,013	28%	23,272	25%	11,331	12%	34,603	37%
Not Economically Disadvantaged	76,078	11,324	15%	64,754	85%	9,298	14%	15,487	24%	22,693	35%	17,276	27%	39,969	62%
English Language Learner	23,344	7,011	30%	16,333	70%	9,874	60%	4,616	28%	1,635	10%	208	1%	1,843	11%
Non-English Language Learner	162,161	19,998	12%	142,163	88%	32,550	23%	36,884	26%	44,330	31%	28,399	20%	72,729	51%
In Foster Care	659	122	19%	537	81%	249	46%	169	31%	89	17%	30	6%	119	22%
Not in Foster Care	184,846	26,887	15%	157,959	85%	42,175	27%	41,331	26%	45,876	29%	28,577	18%	74,453	47%
Homeless	11,974	3,476	29%	8,498	71%	3,959	47%	2,097	25%	1,722	20%	720	8%	2,442	29%
Not Homeless	173,531	23,533	14%	149,998	86%	38,465	26%	39,403	26%	44,243	29%	27,887	19%	72,130	48%
Migrant	187	51	27%	136	73%	83	61%	40	29%	12	9%	1	1%	13	10%
Not Migrant	185,318	26,958	15%	158,360	85%	42,341	27%	41,460	26%	45,953	29%	28,606	18%	74,559	47%
Parent in Armed Forces	732	80	11%	652	89%	144	22%	173	27%	203	31%	132	20%	335	51%
Parent Not in Armed Forces	184,773	26,929	15%	157,844	85%	42,280	27%	41,327	26%	45,762	29%	28,475	18%	74,237	47%

GRADE 5 ELA RESULTS



Subgroup	Total	Not Tested		Tested		Level 1		Level 2		Level 3		Level 4		Proficient (Levels 3 & 4)	
	#	#	%	#	%	#	%	#	%	#	%	#	%	#	%
All Students	186,366	29,258	16%	157,108	84%	45,699	29%	42,785	27%	48,097	31%	20,527	13%	68,624	44%
Female	90,556	13,651	15%	76,905	85%	19,829	26%	20,933	27%	24,758	32%	11,385	15%	36,143	47%
Male	95,786	15,604	16%	80,182	84%	25,867	32%	21,847	27%	23,331	29%	9,137	11%	32,468	40%
Non-Binary	24	3	13%	21	88%	3	14%	5	24%	8	38%	5	24%	13	62%
General Education Students	147,390	18,700	13%	128,690	87%	28,522	22%	35,950	28%	44,431	35%	19,787	15%	64,218	50%
Students with Disabilities	38,976	10,558	27%	28,418	73%	17,177	60%	6,835	24%	3,666	13%	740	3%	4,406	16%
American Indian or Alaska Native	1,437	192	13%	1,245	87%	400	32%	361	29%	343	28%	141	11%	484	39%
Asian or Native Hawaiian/Other Pacific Islander	19,396	1,885	10%	17,511	90%	2,550	15%	3,704	21%	6,591	38%	4,666	27%	11,257	64%
Black or African American	28,226	3,545	13%	24,681	87%	9,249	37%	7,100	29%	6,382	26%	1,950	8%	8,332	34%
Hispanic or Latino	56,926	10,359	18%	46,567	82%	18,015	39%	13,540	29%	11,574	25%	3,438	7%	15,012	32%
White	73,693	12,448	17%	61,245	83%	13,857	23%	16,658	27%	21,430	35%	9,300	15%	30,730	50%
Multiracial	6,688	829	12%	5,859	88%	1,628	28%	1,422	24%	1,777	30%	1,032	18%	2,809	48%
Economically Disadvantaged	110,357	16,609	15%	93,748	85%	35,592	38%	26,921	29%	23,692	25%	7,543	8%	31,235	33%
Not Economically Disadvantaged	76,009	12,649	17%	63,360	83%	10,107	16%	15,864	25%	24,405	39%	12,984	20%	37,389	59%
English Language Learner	20,264	6,603	33%	13,661	67%	9,842	72%	3,033	22%	745	5%	41	0%	786	6%
Non-English Language Learner	166,102	22,655	14%	143,447	86%	35,857	25%	39,752	28%	47,352	33%	20,486	14%	67,838	47%
In Foster Care	654	107	16%	547	84%	293	54%	149	27%	90	16%	15	3%	105	19%
Not in Foster Care	185,712	29,151	16%	156,561	84%	45,406	29%	42,636	27%	48,007	31%	20,512	13%	68,519	44%
Homeless	12,034	3,430	29%	8,604	71%	4,249	49%	2,179	25%	1,716	20%	460	5%	2,176	25%
Not Homeless	174,332	25,828	15%	148,504	85%	41,450	28%	40,606	27%	46,381	31%	20,067	14%	66,448	45%
Migrant	187	38	20%	149	80%	93	62%	31	21%	21	14%	4	3%	25	17%
Not Migrant	186,179	29,220	16%	156,959	84%	45,606	29%	42,754	27%	48,076	31%	20,523	13%	68,599	44%
Parent in Armed Forces	745	89	12%	656	88%	158	24%	191	29%	224	34%	83	13%	307	47%
Parent Not in Armed Forces	185,621	29,169	16%	156,452	84%	45,541	29%	42,594	27%	47,873	31%	20,444	13%	68,317	44%

GRADE 6 ELA RESULTS



Subgroup	Total	Not Tested		Tested		Level 1		Level 2		Level 3		Level 4		Proficient (Levels 3 & 4)	
	#	#	%	#	%	#	%	#	%	#	%	#	%	#	%
All Students	189,385	32,074	17%	157,311	83%	45,649	29%	43,015	27%	44,472	28%	24,175	15%	68,647	44%
Female	92,064	15,259	17%	76,805	83%	18,906	25%	20,818	27%	23,191	30%	13,890	18%	37,081	48%
Male	97,269	16,804	17%	80,465	83%	26,736	33%	22,189	28%	21,262	26%	10,278	13%	31,540	39%
Non-Binary	52	11	21%	41	79%	7	17%	8	20%	19	46%	7	17%	26	63%
General Education Students	150,837	21,821	14%	129,016	86%	28,146	22%	36,246	28%	41,236	32%	23,388	18%	64,624	50%
Students with Disabilities	38,548	10,253	27%	28,295	73%	17,503	62%	6,769	24%	3,236	11%	787	3%	4,023	14%
American Indian or Alaska Native	1,465	212	14%	1,253	86%	390	31%	356	28%	368	29%	139	11%	507	40%
Asian or Native Hawaiian/Other Pacific Islander	20,421	1,946	10%	18,475	90%	2,548	14%	3,581	19%	6,201	34%	6,145	33%	12,346	67%
Black or African American	29,356	3,837	13%	25,519	87%	9,212	36%	7,342	29%	6,496	25%	2,469	10%	8,965	35%
Hispanic or Latino	57,685	10,632	18%	47,053	82%	18,119	39%	13,570	29%	11,076	24%	4,288	9%	15,364	33%
White	73,956	14,454	20%	59,502	80%	13,855	23%	16,782	28%	18,768	32%	10,097	17%	28,865	49%
Multiracial	6,502	993	15%	5,509	85%	1,525	28%	1,384	25%	1,563	28%	1,037	19%	2,600	47%
Economically Disadvantaged	114,124	17,657	15%	96,467	85%	35,711	37%	27,353	28%	23,183	24%	10,220	11%	33,403	35%
Not Economically Disadvantaged	75,261	14,417	19%	60,844	81%	9,938	16%	15,662	26%	21,289	35%	13,955	23%	35,244	58%
English Language Learner	20,680	6,740	33%	13,940	67%	10,525	76%	2,733	20%	624	4%	58	0%	682	5%
Non-English Language Learner	168,705	25,334	15%	143,371	85%	35,124	24%	40,282	28%	43,848	31%	24,117	17%	67,965	47%
In Foster Care	616	101	16%	515	84%	287	56%	127	25%	81	16%	20	4%	101	20%
Not in Foster Care	188,769	31,973	17%	156,796	83%	45,362	29%	42,888	27%	44,391	28%	24,155	15%	68,546	44%
Homeless	12,422	3,296	27%	9,126	73%	4,406	48%	2,301	25%	1,742	19%	677	7%	2,419	27%
Not Homeless	176,963	28,778	16%	148,185	84%	41,243	28%	40,714	27%	42,730	29%	23,498	16%	66,228	45%
Migrant	170	50	29%	120	71%	73	61%	35	29%	11	9%	1	1%	12	10%
Not Migrant	189,215	32,024	17%	157,191	83%	45,576	29%	42,980	27%	44,461	28%	24,174	15%	68,635	44%
Parent in Armed Forces	765	90	12%	675	88%	176	26%	209	31%	210	31%	80	12%	290	43%
Parent Not in Armed Forces	188,620	31,984	17%	156,636	83%	45,473	29%	42,806	27%	44,262	28%	24,095	15%	68,357	44%

GRADE 7 ELA RESULTS



Subgroup	Total	Not Tested		Tested		Level 1		Level 2		Level 3		Level 4		Proficient (Levels 3 & 4)	
	#	#	%	#	%	#	%	#	%	#	%	#	%	#	%
All Students	191,183	37,463	20%	153,720	80%	36,836	24%	40,697	26%	48,472	32%	27,715	18%	76,187	50%
Female	93,049	18,234	20%	74,815	80%	14,655	20%	19,346	26%	25,281	34%	15,533	21%	40,814	55%
Male	98,076	19,220	20%	78,856	80%	22,177	28%	21,338	27%	23,172	29%	12,169	15%	35,341	45%
Non-Binary	58	9	16%	49	84%	4	8%	13	27%	19	39%	13	27%	32	65%
General Education Students	153,040	26,184	17%	126,856	83%	22,613	18%	33,221	26%	44,326	35%	26,696	21%	71,022	56%
Students with Disabilities	38,143	11,279	30%	26,864	70%	14,223	53%	7,476	28%	4,146	15%	1,019	4%	5,165	19%
American Indian or Alaska Native	1,422	221	16%	1,201	84%	349	29%	326	27%	354	29%	172	14%	526	44%
Asian or Native Hawaiian/Other Pacific Islander	19,310	2,014	10%	17,296	90%	1,685	10%	2,713	16%	6,156	36%	6,742	39%	12,898	75%
Black or African American	30,135	4,373	15%	25,762	85%	7,405	29%	7,314	28%	7,770	30%	3,273	13%	11,043	43%
Hispanic or Latino	58,195	11,784	20%	46,411	80%	14,436	31%	13,422	29%	13,049	28%	5,504	12%	18,553	40%
White	75,695	17,855	24%	57,840	76%	11,701	20%	15,646	27%	19,576	34%	10,917	19%	30,493	53%
Multiracial	6,426	1,216	19%	5,210	81%	1,260	24%	1,276	24%	1,567	30%	1,107	21%	2,674	51%
Economically Disadvantaged	111,893	19,795	18%	92,098	82%	27,968	30%	26,160	28%	25,879	28%	12,091	13%	37,970	41%
Not Economically Disadvantaged	79,290	17,668	22%	61,622	78%	8,868	14%	14,537	24%	22,593	37%	15,624	25%	38,217	62%
English Language Learner	18,655	6,527	35%	12,128	65%	8,699	72%	2,681	22%	704	6%	44	0%	748	6%
Non-English Language Learner	172,528	30,936	18%	141,592	82%	28,137	20%	38,016	27%	47,768	34%	27,671	20%	75,439	53%
In Foster Care	639	136	21%	503	79%	232	46%	137	27%	108	21%	26	5%	134	27%
Not in Foster Care	190,544	37,327	20%	153,217	80%	36,604	24%	40,560	26%	48,364	32%	27,689	18%	76,053	50%
Homeless	12,114	3,238	27%	8,876	73%	3,580	40%	2,370	27%	2,092	24%	834	9%	2,926	33%
Not Homeless	179,069	34,225	19%	144,844	81%	33,256	23%	38,327	26%	46,380	32%	26,881	19%	73,261	51%
Migrant	147	50	34%	97	66%	62	64%	20	21%	14	14%	1	1%	15	15%
Not Migrant	191,036	37,413	20%	153,623	80%	36,774	24%	40,677	26%	48,458	32%	27,714	18%	76,172	50%
Parent in Armed Forces	652	83	13%	569	87%	109	19%	153	27%	194	34%	113	20%	307	54%
Parent Not in Armed Forces	190,531	37,380	20%	153,151	80%	36,727	24%	40,544	26%	48,278	32%	27,602	18%	75,880	50%

GRADE 8 ELA RESULTS



Subgroup	Total	Not Tested		Tested		Level 1		Level 2		Level 3		Level 4		Proficient (Levels 3 & 4)	
	#	#	%	#	%	#	%	#	%	#	%	#	%	#	%
All Students	194,477	47,960	25%	146,517	75%	33,453	23%	37,054	25%	41,625	28%	34,385	23%	76,010	52%
Female	94,039	24,141	26%	69,898	74%	12,978	19%	17,060	24%	20,580	29%	19,280	28%	39,860	57%
Male	100,342	23,790	24%	76,552	76%	20,470	27%	19,981	26%	21,023	27%	15,078	20%	36,101	47%
Non-Binary	96	29	30%	67	70%	5	7%	13	19%	22	33%	27	40%	49	73%
General Education Students	156,155	35,184	23%	120,971	77%	20,687	17%	29,388	24%	37,705	31%	33,191	27%	70,896	59%
Students with Disabilities	38,322	12,776	33%	25,546	67%	12,766	50%	7,666	30%	3,920	15%	1,194	5%	5,114	20%
American Indian or Alaska Native	1,348	245	18%	1,103	82%	286	26%	294	27%	307	28%	216	20%	523	47%
Asian or Native Hawaiian/Other Pacific Islander	19,284	2,655	14%	16,629	86%	1,712	10%	2,516	15%	4,765	29%	7,636	46%	12,401	75%
Black or African American	31,086	6,104	20%	24,982	80%	7,125	29%	7,131	29%	6,755	27%	3,971	16%	10,726	43%
Hispanic or Latino	59,993	14,373	24%	45,620	76%	13,851	30%	12,539	27%	11,962	26%	7,268	16%	19,230	42%
White	76,540	22,967	30%	53,573	70%	9,475	18%	13,448	25%	16,613	31%	14,037	26%	30,650	57%
Multiracial	6,226	1,616	26%	4,610	74%	1,004	22%	1,126	24%	1,223	27%	1,257	27%	2,480	54%
Economically Disadvantaged	113,970	24,586	22%	89,384	78%	25,816	29%	24,436	27%	23,642	26%	15,490	17%	39,132	44%
Not Economically Disadvantaged	80,507	23,374	29%	57,133	71%	7,637	13%	12,618	22%	17,983	31%	18,895	33%	36,878	65%
English Language Learner	17,982	6,512	36%	11,470	64%	8,712	76%	2,317	20%	399	3%	42	0%	441	4%
Non-English Language Learner	176,495	41,448	23%	135,047	77%	24,741	18%	34,737	26%	41,226	31%	34,343	25%	75,569	56%
In Foster Care	666	194	29%	472	71%	207	44%	138	29%	89	19%	38	8%	127	27%
Not in Foster Care	193,811	47,766	25%	146,045	75%	33,246	23%	36,916	25%	41,536	28%	34,347	24%	75,883	52%
Homeless	12,046	3,496	29%	8,550	71%	3,417	40%	2,226	26%	1,913	22%	994	12%	2,907	34%
Not Homeless	182,431	44,464	24%	137,967	76%	30,036	22%	34,828	25%	39,712	29%	33,391	24%	73,103	53%
Migrant	183	58	32%	125	68%	75	60%	32	26%	13	10%	5	4%	18	14%
Not Migrant	194,294	47,902	25%	146,392	75%	33,378	23%	37,022	25%	41,612	28%	34,380	23%	75,992	52%
Parent in Armed Forces	610	106	17%	504	83%	89	18%	133	26%	149	30%	133	26%	282	56%
Parent Not in Armed Forces	193,867	47,854	25%	146,013	75%	33,364	23%	36,921	25%	41,476	28%	34,252	23%	75,728	52%

GRADES 3-8 MATHEMATICS RESULTS (2023-24)

SUMMARY RESULTS



Grade	Total	Not Tested		Tested		Level 1		Level 2		Level 3		Level 4 & Above		Proficient (Levels 3 & Above)	
	#	#	%	#	%	#	%	#	%	#	%	#	%	#	%
Grade 3	181,910	20,778	11%	161,132	89%	22,420	14%	51,812	32%	63,714	40%	23,186	14%	86,900	54%
Grade 4	185,502	23,419	13%	162,083	87%	31,997	20%	36,026	22%	61,810	38%	32,250	20%	94,060	58%
Grade 5	186,363	26,569	14%	159,794	86%	45,086	28%	36,521	23%	51,777	32%	26,410	17%	78,187	49%
Grade 6	189,378	31,124	16%	158,254	84%	38,852	25%	39,389	25%	56,830	36%	23,183	15%	80,013	51%
Regents 6	—	—	—	8	0%	1	13%	0	0%	0	0%	7	88%	7	88%
Combined 6	189,378	31,116	16%	158,262	84%	38,853	25%	39,389	25%	56,830	36%	23,190	15%	80,020	51%
Grade 7	191,162	38,796	20%	152,366	80%	27,103	18%	38,288	25%	46,755	31%	40,220	26%	86,975	57%
Regents 7	—	—	—	1,043	1%	37	4%	42	4%	102	10%	862	83%	964	92%
Combined 7	191,162	37,753	20%	153,409	80%	27,140	18%	38,330	25%	46,857	31%	41,082	27%	87,939	57%
Grade 8	194,478	97,338	50%	97,140	50%	37,682	39%	19,899	20%	27,189	28%	12,370	13%	39,559	41%
Regents 8	—	—	—	60,770	31%	4,618	8%	5,989	10%	12,208	20%	37,955	62%	50,163	83%
Combined 8	194,478	36,568	19%	157,910	81%	42,300	27%	25,888	16%	39,397	25%	50,325	32%	89,722	57%
Grades 3-8	1,128,793	176,203	16%	952,590	84%	207,796	22%	227,966	24%	320,385	34%	196,443	21%	516,828	54%

See report card Glossary and Guide for criteria used to include students in this table.

GRADE 3 MATH RESULTS



Subgroup	Total	Not Tested		Tested		Level 1		Level 2		Level 3		Level 4		Proficient (Levels 3 & 4)	
	#	#	%	#	%	#	%	#	%	#	%	#	%	#	%
All Students	181,910	20,778	11%	161,132	89%	22,420	14%	51,812	32%	63,714	40%	23,186	14%	86,900	54%
Female	88,540	9,166	10%	79,374	90%	11,181	14%	27,108	34%	31,102	39%	9,983	13%	41,085	52%
Male	93,340	11,604	12%	81,736	88%	11,235	14%	24,699	30%	32,606	40%	13,196	16%	45,802	56%
Non-Binary	30	8	27%	22	73%	4	18%	5	23%	6	27%	7	32%	13	59%
General Education Students	144,235	10,899	8%	133,336	92%	12,652	9%	41,382	31%	57,677	43%	21,625	16%	79,302	59%
Students with Disabilities	37,675	9,879	26%	27,796	74%	9,768	35%	10,430	38%	6,037	22%	1,561	6%	7,598	27%
American Indian or Alaska Native	1,452	150	10%	1,302	90%	206	16%	444	34%	463	36%	189	15%	652	50%
Asian or Native Hawaiian/Other Pacific Islander	19,438	1,259	6%	18,179	94%	1,028	6%	3,402	19%	7,975	44%	5,774	32%	13,749	76%
Black or African American	26,565	3,146	12%	23,419	88%	4,593	20%	8,135	35%	7,931	34%	2,760	12%	10,691	46%
Hispanic or Latino	55,840	7,300	13%	48,540	87%	9,511	20%	18,379	38%	16,338	34%	4,312	9%	20,650	43%
White	71,893	8,309	12%	63,584	88%	6,213	10%	19,586	31%	28,699	45%	9,086	14%	37,785	59%
Multiracial	6,722	614	9%	6,108	91%	869	14%	1,866	31%	2,308	38%	1,065	17%	3,373	55%
Economically Disadvantaged	107,919	12,266	11%	95,653	89%	18,308	19%	35,245	37%	32,312	34%	9,788	10%	42,100	44%
Not Economically Disadvantaged	73,991	8,512	12%	65,479	88%	4,112	6%	16,567	25%	31,402	48%	13,398	20%	44,800	68%
English Language Learner	25,221	3,206	13%	22,015	87%	5,937	27%	9,426	43%	5,565	25%	1,087	5%	6,652	30%
Non-English Language Learner	156,689	17,572	11%	139,117	89%	16,483	12%	42,386	30%	58,149	42%	22,099	16%	80,248	58%
In Foster Care	681	105	15%	576	85%	181	31%	247	43%	124	22%	24	4%	148	26%
Not in Foster Care	181,229	20,673	11%	160,556	89%	22,239	14%	51,565	32%	63,590	40%	23,162	14%	86,752	54%
Homeless	11,662	1,872	16%	9,790	84%	2,863	29%	3,735	38%	2,474	25%	718	7%	3,192	33%
Not Homeless	170,248	18,906	11%	151,342	89%	19,557	13%	48,077	32%	61,240	40%	22,468	15%	83,708	55%
Migrant	188	18	10%	170	90%	58	34%	76	45%	34	20%	2	1%	36	21%
Not Migrant	181,722	20,760	11%	160,962	89%	22,362	14%	51,736	32%	63,680	40%	23,184	14%	86,864	54%
Parent in Armed Forces	719	64	9%	655	91%	75	11%	228	35%	284	43%	68	10%	352	54%
Parent Not in Armed Forces	181,191	20,714	11%	160,477	89%	22,345	14%	51,584	32%	63,430	40%	23,118	14%	86,548	54%

GRADE 4 MATH RESULTS



Subgroup	Total	Not Tested		Tested		Level 1		Level 2		Level 3		Level 4		Proficient (Levels 3 & 4)	
	#	#	%	#	%	#	%	#	%	#	%	#	%	#	%
All Students	185,502	23,419	13%	162,083	87%	31,997	20%	36,026	22%	61,810	38%	32,250	20%	94,060	58%
Female	90,777	10,918	12%	79,859	88%	16,581	21%	18,906	24%	29,829	37%	14,543	18%	44,372	56%
Male	94,715	12,499	13%	82,216	87%	15,415	19%	17,119	21%	31,979	39%	17,703	22%	49,682	60%
Non-Binary	10	2	20%	8	80%	1	13%	1	13%	2	25%	4	50%	6	75%
General Education Students	147,040	13,199	9%	133,841	91%	18,950	14%	28,936	22%	55,471	41%	30,484	23%	85,955	64%
Students with Disabilities	38,462	10,220	27%	28,242	73%	13,047	46%	7,090	25%	6,339	22%	1,766	6%	8,105	29%
American Indian or Alaska Native	1,367	161	12%	1,206	88%	278	23%	289	24%	449	37%	190	16%	639	53%
Asian or Native Hawaiian/Other Pacific Islander	19,804	1,135	6%	18,669	94%	1,398	7%	2,196	12%	6,845	37%	8,230	44%	15,075	81%
Black or African American	27,481	3,289	12%	24,192	88%	7,007	29%	5,895	24%	7,871	33%	3,419	14%	11,290	47%
Hispanic or Latino	56,288	7,717	14%	48,571	86%	13,660	28%	12,789	26%	16,337	34%	5,785	12%	22,122	46%
White	73,678	10,378	14%	63,300	86%	8,453	13%	13,563	21%	28,108	44%	13,176	21%	41,284	65%
Multiracial	6,884	739	11%	6,145	89%	1,201	20%	1,294	21%	2,200	36%	1,450	24%	3,650	59%
Economically Disadvantaged	109,428	13,122	12%	96,306	88%	26,244	27%	24,652	26%	32,089	33%	13,321	14%	45,410	47%
Not Economically Disadvantaged	76,074	10,297	14%	65,777	86%	5,753	9%	11,374	17%	29,721	45%	18,929	29%	48,650	74%
English Language Learner	23,337	3,124	13%	20,213	87%	8,391	42%	5,891	29%	4,916	24%	1,015	5%	5,931	29%
Non-English Language Learner	162,165	20,295	13%	141,870	87%	23,606	17%	30,135	21%	56,894	40%	31,235	22%	88,129	62%
In Foster Care	658	122	19%	536	81%	211	39%	161	30%	133	25%	31	6%	164	31%
Not in Foster Care	184,844	23,297	13%	161,547	87%	31,786	20%	35,865	22%	61,677	38%	32,219	20%	93,896	58%
Homeless	11,974	1,883	16%	10,091	84%	4,196	42%	2,526	25%	2,503	25%	866	9%	3,369	33%
Not Homeless	173,528	21,536	12%	151,992	88%	27,801	18%	33,500	22%	59,307	39%	31,384	21%	90,691	60%
Migrant	187	20	11%	167	89%	77	46%	56	34%	32	19%	2	1%	34	20%
Not Migrant	185,315	23,399	13%	161,916	87%	31,920	20%	35,970	22%	61,778	38%	32,248	20%	94,026	58%
Parent in Armed Forces	732	71	10%	661	90%	97	15%	156	24%	272	41%	136	21%	408	62%
Parent Not in Armed Forces	184,770	23,348	13%	161,422	87%	31,900	20%	35,870	22%	61,538	38%	32,114	20%	93,652	58%

GRADE 5 MATH RESULTS



Subgroup	Total	Not Tested		Tested		Level 1		Level 2		Level 3		Level 4		Proficient (Levels 3 & 4)	
	#	#	%	#	%	#	%	#	%	#	%	#	%	#	%
All Students	186,363	26,569	14%	159,794	86%	45,086	28%	36,521	23%	51,777	32%	26,410	17%	78,187	49%
Female	90,555	12,731	14%	77,824	86%	22,666	29%	19,146	25%	25,233	32%	10,779	14%	36,012	46%
Male	95,784	13,835	14%	81,949	86%	22,414	27%	17,368	21%	26,540	32%	15,627	19%	42,167	51%
Non-Binary	24	3	13%	21	88%	6	29%	7	33%	4	19%	4	19%	8	38%
General Education Students	147,387	15,837	11%	131,550	89%	28,948	22%	30,454	23%	47,108	36%	25,040	19%	72,148	55%
Students with Disabilities	38,976	10,732	28%	28,244	72%	16,138	57%	6,067	21%	4,669	17%	1,370	5%	6,039	21%
American Indian or Alaska Native	1,438	184	13%	1,254	87%	404	32%	287	23%	384	31%	179	14%	563	45%
Asian or Native Hawaiian/Other Pacific Islander	19,396	1,215	6%	18,181	94%	1,984	11%	2,563	14%	6,521	36%	7,113	39%	13,634	75%
Black or African American	28,225	3,482	12%	24,743	88%	9,850	40%	6,149	25%	6,355	26%	2,389	10%	8,744	35%
Hispanic or Latino	56,923	8,373	15%	48,550	85%	18,560	38%	12,226	25%	13,307	27%	4,457	9%	17,764	37%
White	73,693	12,410	17%	61,283	83%	12,699	21%	14,039	23%	23,409	38%	11,136	18%	34,545	56%
Multiracial	6,688	905	14%	5,783	86%	1,589	27%	1,257	22%	1,801	31%	1,136	20%	2,937	51%
Economically Disadvantaged	110,356	14,735	13%	95,621	87%	35,405	37%	23,457	25%	26,118	27%	10,641	11%	36,759	38%
Not Economically Disadvantaged	76,007	11,834	16%	64,173	84%	9,681	15%	13,064	20%	25,659	40%	15,769	25%	41,428	65%
English Language Learner	20,263	3,032	15%	17,231	85%	9,973	58%	4,177	24%	2,526	15%	555	3%	3,081	18%
Non-English Language Learner	166,100	23,537	14%	142,563	86%	35,113	25%	32,344	23%	49,251	35%	25,855	18%	75,106	53%
In Foster Care	654	111	17%	543	83%	302	56%	115	21%	99	18%	27	5%	126	23%
Not in Foster Care	185,709	26,458	14%	159,251	86%	44,784	28%	36,406	23%	51,678	32%	26,383	17%	78,061	49%
Homeless	12,034	1,964	16%	10,070	84%	4,978	49%	2,235	22%	2,147	21%	710	7%	2,857	28%
Not Homeless	174,329	24,605	14%	149,724	86%	40,108	27%	34,286	23%	49,630	33%	25,700	17%	75,330	50%
Migrant	187	17	9%	170	91%	90	53%	50	29%	25	15%	5	3%	30	18%
Not Migrant	186,176	26,552	14%	159,624	86%	44,996	28%	36,471	23%	51,752	32%	26,405	17%	78,157	49%
Parent in Armed Forces	745	81	11%	664	89%	162	24%	141	21%	254	38%	107	16%	361	54%
Parent Not in Armed Forces	185,618	26,488	14%	159,130	86%	44,924	28%	36,380	23%	51,523	32%	26,303	17%	77,826	49%

GRADE 6 MATH RESULTS



Subgroup	Total	Not Tested		Tested		Level 1		Level 2		Level 3		Level 4		Proficient (Levels 3 & 4)	
	#	#	%	#	%	#	%	#	%	#	%	#	%	#	%
All Students	189,378	31,124	16%	158,254	84%	38,852	25%	39,389	25%	56,830	36%	23,183	15%	80,013	51%
Female	92,059	15,379	17%	76,680	83%	18,742	24%	19,564	26%	27,241	36%	11,133	15%	38,374	50%
Male	97,267	15,729	16%	81,538	84%	20,106	25%	19,814	24%	29,575	36%	12,043	15%	41,618	51%
Non-Binary	52	16	31%	36	69%	4	11%	11	31%	14	39%	7	19%	21	58%
General Education Students	150,833	19,964	13%	130,869	87%	23,950	18%	32,303	25%	52,271	40%	22,345	17%	74,616	57%
Students with Disabilities	38,545	11,160	29%	27,385	71%	14,902	54%	7,086	26%	4,559	17%	838	3%	5,397	20%
American Indian or Alaska Native	1,465	205	14%	1,260	86%	343	27%	376	30%	418	33%	123	10%	541	43%
Asian or Native Hawaiian/Other Pacific Islander	20,418	1,276	6%	19,142	94%	1,753	9%	2,600	14%	7,386	39%	7,403	39%	14,789	77%
Black or African American	29,354	4,086	14%	25,268	86%	8,873	35%	6,962	28%	7,312	29%	2,121	8%	9,433	37%
Hispanic or Latino	57,680	9,234	16%	48,446	84%	16,821	35%	13,949	29%	14,233	29%	3,443	7%	17,676	36%
White	73,958	15,242	21%	58,716	79%	9,754	17%	14,309	24%	25,537	43%	9,116	16%	34,653	59%
Multiracial	6,503	1,081	17%	5,422	83%	1,308	24%	1,193	22%	1,944	36%	977	18%	2,921	54%
Economically Disadvantaged	114,119	16,847	15%	97,272	85%	31,458	32%	26,874	28%	29,175	30%	9,765	10%	38,940	40%
Not Economically Disadvantaged	75,259	14,277	19%	60,982	81%	7,394	12%	12,515	21%	27,655	45%	13,418	22%	41,073	67%
English Language Learner	20,671	3,023	15%	17,648	85%	9,603	54%	5,077	29%	2,608	15%	360	2%	2,968	17%
Non-English Language Learner	168,707	28,101	17%	140,606	83%	29,249	21%	34,312	24%	54,222	39%	22,823	16%	77,045	55%
In Foster Care	615	105	17%	510	83%	245	48%	138	27%	113	22%	14	3%	127	25%
Not in Foster Care	188,763	31,019	16%	157,744	84%	38,607	24%	39,251	25%	56,717	36%	23,169	15%	79,886	51%
Homeless	12,420	1,899	15%	10,521	85%	4,704	45%	2,901	28%	2,272	22%	644	6%	2,916	28%
Not Homeless	176,958	29,225	17%	147,733	83%	34,148	23%	36,488	25%	54,558	37%	22,539	15%	77,097	52%
Migrant	170	27	16%	143	84%	80	56%	30	21%	32	22%	1	1%	33	23%
Not Migrant	189,208	31,097	16%	158,111	84%	38,772	25%	39,359	25%	56,798	36%	23,182	15%	79,980	51%
Parent in Armed Forces	765	95	12%	670	88%	150	22%	175	26%	255	38%	90	13%	345	51%
Parent Not in Armed Forces	188,613	31,029	16%	157,584	84%	38,702	25%	39,214	25%	56,575	36%	23,093	15%	79,668	51%

GRADE 7 MATH RESULTS



Subgroup	Total	Not Tested		Tested		Level 1		Level 2		Level 3		Level 4		Proficient (Levels 3 & 4)	
	#	#	%	#	%	#	%	#	%	#	%	#	%	#	%
All Students	191,162	38,796	20%	152,366	80%	27,103	18%	38,288	25%	46,755	31%	40,220	26%	86,975	57%
Female	93,038	19,408	21%	73,630	79%	12,544	17%	18,919	26%	23,100	31%	19,067	26%	42,167	57%
Male	98,066	19,371	20%	78,695	80%	14,557	18%	19,358	25%	23,639	30%	21,141	27%	44,780	57%
Non-Binary	58	17	29%	41	71%	2	5%	11	27%	16	39%	12	29%	28	68%
General Education Students	153,023	26,417	17%	126,606	83%	15,964	13%	29,962	24%	42,218	33%	38,462	30%	80,680	64%
Students with Disabilities	38,139	12,379	32%	25,760	68%	11,139	43%	8,326	32%	4,537	18%	1,758	7%	6,295	24%
American Indian or Alaska Native	1,422	224	16%	1,198	84%	291	24%	343	29%	325	27%	239	20%	564	47%
Asian or Native Hawaiian/Other Pacific Islander	19,312	1,774	9%	17,538	91%	1,014	6%	2,071	12%	4,552	26%	9,901	56%	14,453	82%
Black or African American	30,130	4,993	17%	25,137	83%	6,601	26%	7,573	30%	6,887	27%	4,076	16%	10,963	44%
Hispanic or Latino	58,182	11,117	19%	47,065	81%	11,652	25%	14,607	31%	13,569	29%	7,237	15%	20,806	44%
White	75,691	19,266	25%	56,425	75%	6,658	12%	12,471	22%	19,949	35%	17,347	31%	37,296	66%
Multiracial	6,425	1,422	22%	5,003	78%	887	18%	1,223	24%	1,473	29%	1,420	28%	2,893	58%
Economically Disadvantaged	111,882	20,231	18%	91,651	82%	21,526	23%	27,021	29%	25,992	28%	17,112	19%	43,104	47%
Not Economically Disadvantaged	79,280	18,565	23%	60,715	77%	5,577	9%	11,267	19%	20,763	34%	23,108	38%	43,871	72%
English Language Learner	18,641	3,207	17%	15,434	83%	6,925	45%	5,317	34%	2,425	16%	767	5%	3,192	21%
Non-English Language Learner	172,521	35,589	21%	136,932	79%	20,178	15%	32,971	24%	44,330	32%	39,453	29%	83,783	61%
In Foster Care	638	150	24%	488	76%	191	39%	174	36%	87	18%	36	7%	123	25%
Not in Foster Care	190,524	38,646	20%	151,878	80%	26,912	18%	38,114	25%	46,668	31%	40,184	26%	86,852	57%
Homeless	12,109	2,074	17%	10,035	83%	3,224	32%	3,205	32%	2,398	24%	1,208	12%	3,606	36%
Not Homeless	179,053	36,722	21%	142,331	79%	23,879	17%	35,083	25%	44,357	31%	39,012	27%	83,369	59%
Migrant	147	33	22%	114	78%	55	48%	36	32%	18	16%	5	4%	23	20%
Not Migrant	191,015	38,763	20%	152,252	80%	27,048	18%	38,252	25%	46,737	31%	40,215	26%	86,952	57%
Parent in Armed Forces	652	87	13%	565	87%	70	12%	138	24%	202	36%	155	27%	357	63%
Parent Not in Armed Forces	190,510	38,709	20%	151,801	80%	27,033	18%	38,150	25%	46,553	31%	40,065	26%	86,618	57%

GRADE 8 MATH RESULTS



Subgroup	Total	Not Tested		Tested		Level 1		Level 2		Level 3		Level 4		Proficient (Levels 3 & 4)	
	#	#	%	#	%	#	%	#	%	#	%	#	%	#	%
All Students	194,478	97,338	50%	97,140	50%	37,682	39%	19,899	20%	27,189	28%	12,370	13%	39,559	41%
Female	94,039	48,542	52%	45,497	48%	16,475	36%	9,587	21%	13,543	30%	5,892	13%	19,435	43%
Male	100,343	48,741	49%	51,602	51%	21,192	41%	10,307	20%	13,633	26%	6,470	13%	20,103	39%
Non-Binary	96	55	57%	41	43%	15	37%	5	12%	13	32%	8	20%	21	51%
General Education Students	156,155	78,975	51%	77,180	49%	24,222	31%	16,540	21%	24,708	32%	11,710	15%	36,418	47%
Students with Disabilities	38,323	18,363	48%	19,960	52%	13,460	67%	3,359	17%	2,481	12%	660	3%	3,141	16%
American Indian or Alaska Native	1,348	609	45%	739	55%	342	46%	147	20%	180	24%	70	9%	250	34%
Asian or Native Hawaiian/Other Pacific Islander	19,284	11,158	58%	8,126	42%	1,530	19%	1,179	15%	2,550	31%	2,867	35%	5,417	67%
Black or African American	31,086	13,451	43%	17,635	57%	8,692	49%	3,402	19%	3,943	22%	1,598	9%	5,541	31%
Hispanic or Latino	59,993	27,455	46%	32,538	54%	15,384	47%	6,742	21%	7,573	23%	2,839	9%	10,412	32%
White	76,541	41,396	54%	35,145	46%	10,510	30%	7,857	22%	12,131	35%	4,647	13%	16,778	48%
Multiracial	6,226	3,269	53%	2,957	47%	1,224	41%	572	19%	812	27%	349	12%	1,161	39%
Economically Disadvantaged	113,971	49,426	43%	64,545	57%	29,098	45%	13,118	20%	15,512	24%	6,817	11%	22,329	35%
Not Economically Disadvantaged	80,507	47,912	60%	32,595	40%	8,584	26%	6,781	21%	11,677	36%	5,553	17%	17,230	53%
English Language Learner	17,982	6,416	36%	11,566	64%	7,735	67%	2,009	17%	1,405	12%	417	4%	1,822	16%
Non-English Language Learner	176,496	90,922	52%	85,574	48%	29,947	35%	17,890	21%	25,784	30%	11,953	14%	37,737	44%
In Foster Care	666	300	45%	366	55%	224	61%	67	18%	57	16%	18	5%	75	20%
Not in Foster Care	193,812	97,038	50%	96,774	50%	37,458	39%	19,832	20%	27,132	28%	12,352	13%	39,484	41%
Homeless	12,046	5,090	42%	6,956	58%	3,700	53%	1,315	19%	1,432	21%	509	7%	1,941	28%
Not Homeless	182,432	92,248	51%	90,184	49%	33,982	38%	18,584	21%	25,757	29%	11,861	13%	37,618	42%
Migrant	183	42	23%	141	77%	94	67%	24	17%	21	15%	2	1%	23	16%
Not Migrant	194,295	97,296	50%	96,999	50%	37,588	39%	19,875	20%	27,168	28%	12,368	13%	39,536	41%
Parent in Armed Forces	610	254	42%	356	58%	122	34%	68	19%	103	29%	63	18%	166	47%
Parent Not in Armed Forces	193,868	97,084	50%	96,784	50%	37,560	39%	19,831	20%	27,086	28%	12,307	13%	39,393	41%

GRADES 5 & 8 SCIENCE RESULTS (2023-24)

The results of the 2023-24 Grades 5 and 8 Science tests represent student achievement on the new NYS P-12 Science Learning Standards. Because the tests measure different learning standards, the results are not comparable to those from prior years.

SUMMARY RESULTS

Grade	Total	Not Tested		Tested		Level 1		Level 2		Level 3		Level 4		Proficient (Levels 3 & 4)	
	#	#	%	#	%	#	%	#	%	#	%	#	%	#	%
Grade 5	186,365	29,030	16%	157,335	84%	32,221	20%	70,054	45%	49,067	31%	5,993	4%	55,060	35%
Grade 8	194,482	105,651	54%	88,831	46%	20,174	23%	38,670	44%	26,331	30%	3,656	4%	29,987	34%
Regents 8	—	—	—	68,053	35%	9,242	14%	5,259	8%	23,961	35%	29,591	43%	53,552	79%
Combined 8	194,482	37,598	19%	156,884	81%	29,416	19%	43,929	28%	50,292	32%	33,247	21%	83,539	53%
Grades 5 & 8	380,847	66,628	17%	314,219	83%	61,637	20%	113,983	36%	99,359	32%	39,240	12%	138,599	44%

See report card Glossary and Guide for criteria used to include students in this table.

GRADE 5 SCIENCE RESULTS



Subgroup	Total	Not Tested		Tested		Level 1		Level 2		Level 3		Level 4		Proficient (Levels 3 & 4)	
	#	#	%	#	%	#	%	#	%	#	%	#	%	#	%
All Students	186,365	29,030	16%	157,335	84%	32,221	20%	70,054	45%	49,067	31%	5,993	4%	55,060	35%
Female	90,555	13,908	15%	76,647	85%	15,362	20%	35,240	46%	23,386	31%	2,659	3%	26,045	34%
Male	95,786	15,119	16%	80,667	84%	16,855	21%	34,806	43%	25,672	32%	3,334	4%	29,006	36%
Non-Binary	24	3	13%	21	88%	4	19%	8	38%	9	43%	0	0%	9	43%
General Education Students	147,389	17,911	12%	129,478	88%	20,667	16%	57,517	44%	45,542	35%	5,752	4%	51,294	40%
Students with Disabilities	38,976	11,119	29%	27,857	71%	11,554	41%	12,537	45%	3,525	13%	241	1%	3,766	14%
American Indian or Alaska Native	1,437	188	13%	1,249	87%	311	25%	574	46%	335	27%	29	2%	364	29%
Asian or Native Hawaiian/Other Pacific Islander	19,398	1,476	8%	17,922	92%	1,892	11%	6,169	34%	8,053	45%	1,808	10%	9,861	55%
Black or African American	28,224	3,748	13%	24,476	87%	7,285	30%	11,699	48%	5,126	21%	366	1%	5,492	22%
Hispanic or Latino	56,922	9,294	16%	47,628	84%	12,451	26%	24,084	51%	10,407	22%	686	1%	11,093	23%
White	73,696	13,357	18%	60,339	82%	9,185	15%	25,181	42%	23,225	38%	2,748	5%	25,973	43%
Multiracial	6,688	967	14%	5,721	86%	1,097	19%	2,347	41%	1,921	34%	356	6%	2,277	40%
Economically Disadvantaged	110,355	16,044	15%	94,311	85%	25,223	27%	45,555	48%	21,786	23%	1,747	2%	23,533	25%
Not Economically Disadvantaged	76,010	12,986	17%	63,024	83%	6,998	11%	24,499	39%	27,281	43%	4,246	7%	31,527	50%
English Language Learner	20,264	3,438	17%	16,826	83%	6,658	40%	8,476	50%	1,598	9%	94	1%	1,692	10%
Non-English Language Learner	166,101	25,592	15%	140,509	85%	25,563	18%	61,578	44%	47,469	34%	5,899	4%	53,368	38%
In Foster Care	654	130	20%	524	80%	213	41%	246	47%	62	12%	3	1%	65	12%
Not in Foster Care	185,711	28,900	16%	156,811	84%	32,008	20%	69,808	45%	49,005	31%	5,990	4%	54,995	35%
Homeless	12,033	2,192	18%	9,841	82%	3,262	33%	4,757	48%	1,714	17%	108	1%	1,822	19%
Not Homeless	174,332	26,838	15%	147,494	85%	28,959	20%	65,297	44%	47,353	32%	5,885	4%	53,238	36%
Migrant	187	26	14%	161	86%	66	41%	75	47%	19	12%	1	1%	20	12%
Not Migrant	186,178	29,004	16%	157,174	84%	32,155	20%	69,979	45%	49,048	31%	5,992	4%	55,040	35%
Parent in Armed Forces	745	85	11%	660	89%	106	16%	296	45%	241	37%	17	3%	258	39%
Parent Not in Armed Forces	185,620	28,945	16%	156,675	84%	32,115	20%	69,758	45%	48,826	31%	5,976	4%	54,802	35%

GRADE 8 SCIENCE RESULTS



Subgroup	Total	Not Tested		Tested		Level 1		Level 2		Level 3		Level 4		Proficient (Levels 3 & 4)	
	#	#	%	#	%	#	%	#	%	#	%	#	%	#	%
All Students	194,482	105,651	54%	88,831	46%	20,174	23%	38,670	44%	26,331	30%	3,656	4%	29,987	34%
Female	94,042	52,890	56%	41,152	44%	8,844	21%	18,502	45%	12,291	30%	1,515	4%	13,806	34%
Male	100,344	52,708	53%	47,636	47%	11,327	24%	20,154	42%	14,021	29%	2,134	4%	16,155	34%
Non-Binary	96	53	55%	43	45%	3	7%	14	33%	19	44%	7	16%	26	60%
General Education Students	156,157	86,144	55%	70,013	45%	12,590	18%	30,113	43%	23,804	34%	3,506	5%	27,310	39%
Students with Disabilities	38,325	19,507	51%	18,818	49%	7,584	40%	8,557	45%	2,527	13%	150	1%	2,677	14%
American Indian or Alaska Native	1,348	677	50%	671	50%	179	27%	321	48%	156	23%	15	2%	171	25%
Asian or Native Hawaiian/Other Pacific Islander	19,284	11,854	61%	7,430	39%	927	12%	2,514	34%	3,106	42%	883	12%	3,989	54%
Black or African American	31,088	15,244	49%	15,844	51%	4,915	31%	7,240	46%	3,378	21%	311	2%	3,689	23%
Hispanic or Latino	59,994	30,731	51%	29,263	49%	7,970	27%	13,902	48%	6,777	23%	614	2%	7,391	25%
White	76,542	43,606	57%	32,936	43%	5,536	17%	13,573	41%	12,114	37%	1,713	5%	13,827	42%
Multiracial	6,226	3,539	57%	2,687	43%	647	24%	1,120	42%	800	30%	120	4%	920	34%
Economically Disadvantaged	113,975	54,949	48%	59,026	52%	15,768	27%	27,012	46%	14,625	25%	1,621	3%	16,246	28%
Not Economically Disadvantaged	80,507	50,702	63%	29,805	37%	4,406	15%	11,658	39%	11,706	39%	2,035	7%	13,741	46%
English Language Learner	17,983	7,060	39%	10,923	61%	4,477	41%	4,988	46%	1,386	13%	72	1%	1,458	13%
Non-English Language Learner	176,499	98,591	56%	77,908	44%	15,697	20%	33,682	43%	24,945	32%	3,584	5%	28,529	37%
In Foster Care	666	341	51%	325	49%	120	37%	154	47%	48	15%	3	1%	51	16%
Not in Foster Care	193,816	105,310	54%	88,506	46%	20,054	23%	38,516	44%	26,283	30%	3,653	4%	29,936	34%
Homeless	12,047	5,337	44%	6,710	56%	2,055	31%	3,126	47%	1,402	21%	127	2%	1,529	23%
Not Homeless	182,435	100,314	55%	82,121	45%	18,119	22%	35,544	43%	24,929	30%	3,529	4%	28,458	35%
Migrant	183	56	31%	127	69%	50	39%	60	47%	16	13%	1	1%	17	13%
Not Migrant	194,299	105,595	54%	88,704	46%	20,124	23%	38,610	44%	26,315	30%	3,655	4%	29,970	34%
Parent in Armed Forces	610	282	46%	328	54%	51	16%	127	39%	141	43%	9	3%	150	46%
Parent Not in Armed Forces	193,872	105,369	54%	88,503	46%	20,123	23%	38,543	44%	26,190	30%	3,647	4%	29,837	34%

ANNUAL REGENTS EXAMINATIONS (2023 - 24)

Annual Regents examination results are those administered in August, January, and June of the reporting year.

ANNUAL REGENTS EXAMINATION IN ELA (2023-24)



Subgroup	Tested	Level 1		Level 2		Level 3		Level 4		Level 5		Proficient (Levels 3 & Above)	
		#	%	#	%	#	%	#	%	#	%	#	%
All Students	223,775	28,204	13%	19,796	9%	48,090	21%	40,909	18%	86,776	39%	175,775	79%
Female	108,231	10,914	10%	8,728	8%	21,881	20%	19,222	18%	47,486	44%	88,589	82%
Male	115,318	17,277	15%	11,061	10%	26,182	23%	21,649	19%	39,149	34%	86,980	75%
Non-Binary	226	13	6%	7	3%	27	12%	38	17%	141	62%	206	91%
General Education Students	184,509	17,800	10%	12,937	7%	36,573	20%	34,961	19%	82,238	45%	153,772	83%
Students with Disabilities	39,266	10,404	26%	6,859	17%	11,517	29%	5,948	15%	4,538	12%	22,003	56%
American Indian or Alaska Native	1,609	253	16%	178	11%	440	27%	299	19%	439	27%	1,178	73%
Asian or Native Hawaiian/Other Pacific Islander	23,286	1,601	7%	1,181	5%	3,197	14%	3,617	16%	13,690	59%	20,504	88%
Black or African American	39,975	7,465	19%	5,345	13%	11,443	29%	7,384	18%	8,338	21%	27,165	68%
Hispanic or Latino	71,446	14,152	20%	8,514	12%	18,259	26%	12,978	18%	17,543	25%	48,780	68%
White	81,099	4,186	5%	4,095	5%	13,504	17%	15,419	19%	43,895	54%	72,818	90%
Multiracial	6,360	547	9%	483	8%	1,247	20%	1,212	19%	2,871	45%	5,330	84%
Economically Disadvantaged	132,494	22,834	17%	15,613	12%	34,461	26%	24,442	18%	35,144	27%	94,047	71%
Not Economically Disadvantaged	91,281	5,370	6%	4,183	5%	13,629	15%	16,467	18%	51,632	57%	81,728	90%
English Language Learner	25,645	12,563	49%	5,000	19%	5,912	23%	1,564	6%	606	2%	8,082	32%
Non-English Language Learner	198,130	15,641	8%	14,796	7%	42,178	21%	39,345	20%	86,170	43%	167,693	85%
In Foster Care	601	153	25%	85	14%	180	30%	95	16%	88	15%	363	60%
Not in Foster Care	223,174	28,051	13%	19,711	9%	47,910	21%	40,814	18%	86,688	39%	175,412	79%
Homeless	12,906	3,854	30%	1,838	14%	3,379	26%	1,914	15%	1,921	15%	7,214	56%
Not Homeless	210,869	24,350	12%	17,958	9%	44,711	21%	38,995	18%	84,855	40%	168,561	80%
Migrant	163	58	36%	30	18%	48	29%	17	10%	10	6%	75	46%
Not Migrant	223,612	28,146	13%	19,766	9%	48,042	21%	40,892	18%	86,766	39%	175,700	79%
Parent in Armed Forces	527	36	7%	28	5%	106	20%	113	21%	244	46%	463	88%
Parent Not in Armed Forces	223,248	28,168	13%	19,768	9%	47,984	21%	40,796	18%	86,532	39%	175,312	79%

ANNUAL REGENTS EXAMINATION IN ALGEBRA I (AUGUST 2023 & JANUARY 2024)



Subgroup	Tested	Level 1		Level 2		Level 3		Level 4		Level 5		Proficient (Levels 3 & Above)	
		#	%	#	%	#	%	#	%	#	%	#	%
All Students	57,969	25,168	43%	14,585	25%	14,855	26%	1,984	3%	1,377	2%	18,216	31%
Female	26,071	10,767	41%	6,610	25%	7,061	27%	966	4%	667	3%	8,694	33%
Male	31,863	14,395	45%	7,969	25%	7,776	24%	1,015	3%	708	2%	9,499	30%
Non-Binary	35	6	17%	6	17%	18	51%	3	9%	2	6%	23	66%
General Education Students	40,917	15,320	37%	10,282	25%	12,145	30%	1,820	4%	1,350	3%	15,315	37%
Students with Disabilities	17,052	9,848	58%	4,303	25%	2,710	16%	164	1%	27	0%	2,901	17%
American Indian or Alaska Native	557	229	41%	149	27%	159	29%	14	3%	6	1%	179	32%
Asian or Native Hawaiian/Other Pacific Islander	3,483	881	25%	642	18%	1,056	30%	385	11%	519	15%	1,960	56%
Black or African American	15,598	7,349	47%	4,111	26%	3,700	24%	332	2%	106	1%	4,138	27%
Hispanic or Latino	25,674	12,297	48%	6,650	26%	6,096	24%	482	2%	149	1%	6,727	26%
White	11,093	3,745	34%	2,660	24%	3,466	31%	691	6%	531	5%	4,688	42%
Multiracial	1,564	667	43%	373	24%	378	24%	80	5%	66	4%	524	34%
Economically Disadvantaged	45,523	20,798	46%	11,812	26%	11,135	24%	1,203	3%	575	1%	12,913	28%
Not Economically Disadvantaged	12,446	4,370	35%	2,773	22%	3,720	30%	781	6%	802	6%	5,303	43%
English Language Learner	13,902	7,680	55%	3,100	22%	2,630	19%	302	2%	190	1%	3,122	22%
Non-English Language Learner	44,067	17,488	40%	11,485	26%	12,225	28%	1,682	4%	1,187	3%	15,094	34%
In Foster Care	342	185	54%	82	24%	72	21%	3	1%	0	0%	75	22%
Not in Foster Care	57,627	24,983	43%	14,503	25%	14,783	26%	1,981	3%	1,377	2%	18,141	31%
Homeless	6,667	3,338	50%	1,634	25%	1,504	23%	133	2%	58	1%	1,695	25%
Not Homeless	51,302	21,830	43%	12,951	25%	13,351	26%	1,851	4%	1,319	3%	16,521	32%
Migrant	46	22	48%	16	35%	6	13%	2	4%	0	0%	8	17%
Not Migrant	57,923	25,146	43%	14,569	25%	14,849	26%	1,982	3%	1,377	2%	18,208	31%
Parent in Armed Forces	99	47	47%	15	15%	28	28%	7	7%	2	2%	37	37%
Parent Not in Armed Forces	57,870	25,121	43%	14,570	25%	14,827	26%	1,977	3%	1,375	2%	18,179	31%

ANNUAL REGENTS EXAMINATION IN ALGEBRA I (JUNE 2024)



Subgroup	Tested	Level 1		Level 2		Level 3		Level 4		Level 5		Proficient (Levels 3 & Above)	
		#	%	#	%	#	%	#	%	#	%	#	%
All Students	223,049	39,495	18%	44,219	20%	61,211	27%	46,569	21%	31,555	14%	139,335	62%
Female	107,379	17,541	16%	20,465	19%	29,821	28%	23,410	22%	16,142	15%	69,373	65%
Male	115,521	21,944	19%	23,732	21%	31,342	27%	23,116	20%	15,387	13%	69,845	60%
Non-Binary	149	10	7%	22	15%	48	32%	43	29%	26	17%	117	79%
General Education Students	182,685	24,695	14%	32,726	18%	51,554	28%	43,026	24%	30,684	17%	125,264	69%
Students with Disabilities	40,364	14,800	37%	11,493	28%	9,657	24%	3,543	9%	871	2%	14,071	35%
American Indian or Alaska Native	1,534	374	24%	361	24%	453	30%	257	17%	89	6%	799	52%
Asian or Native Hawaiian/Other Pacific Islander	21,894	1,538	7%	2,062	9%	4,442	20%	5,707	26%	8,145	37%	18,294	84%
Black or African American	38,797	11,015	28%	10,917	28%	10,933	28%	4,644	12%	1,288	3%	16,865	43%
Hispanic or Latino	75,087	19,352	26%	20,075	27%	21,476	29%	10,455	14%	3,729	5%	35,660	47%
White	78,692	6,095	8%	9,531	12%	21,977	28%	23,973	30%	17,116	22%	63,066	80%
Multiracial	7,045	1,121	16%	1,273	18%	1,930	27%	1,533	22%	1,188	17%	4,651	66%
Economically Disadvantaged	136,084	32,352	24%	34,397	25%	39,382	29%	20,790	15%	9,163	7%	69,335	51%
Not Economically Disadvantaged	86,965	7,143	8%	9,822	11%	21,829	25%	25,779	30%	22,392	26%	70,000	80%
English Language Learner	29,796	11,843	40%	9,199	31%	6,420	22%	1,782	6%	552	2%	8,754	29%
Non-English Language Learner	193,253	27,652	14%	35,020	18%	54,791	28%	44,787	23%	31,003	16%	130,581	68%
In Foster Care	725	282	39%	227	31%	155	21%	56	8%	5	1%	216	30%
Not in Foster Care	222,324	39,213	18%	43,992	20%	61,056	27%	46,513	21%	31,550	14%	139,119	63%
Homeless	15,613	5,513	35%	4,686	30%	3,721	24%	1,294	8%	399	3%	5,414	35%
Not Homeless	207,436	33,982	16%	39,533	19%	57,490	28%	45,275	22%	31,156	15%	133,921	65%
Migrant	224	52	23%	56	25%	84	38%	27	12%	5	2%	116	52%
Not Migrant	222,825	39,443	18%	44,163	20%	61,127	27%	46,542	21%	31,550	14%	139,219	62%
Parent in Armed Forces	630	73	12%	111	18%	220	35%	162	26%	64	10%	446	71%
Parent Not in Armed Forces	222,419	39,422	18%	44,108	20%	60,991	27%	46,407	21%	31,491	14%	138,889	62%

ANNUAL REGENTS EXAMINATION IN GEOMETRY (2023-24)



Subgroup	Tested	Level 1		Level 2		Level 3		Level 4		Level 5		Proficient (Levels 3 & Above)	
		#	%	#	%	#	%	#	%	#	%	#	%
All Students	139,791	38,891	28%	20,600	15%	44,615	32%	12,942	9%	22,743	16%	80,300	57%
Female	70,178	19,047	27%	10,499	15%	22,472	32%	6,599	9%	11,561	16%	40,632	58%
Male	69,502	19,834	29%	10,081	15%	22,104	32%	6,327	9%	11,156	16%	39,587	57%
Non-Binary	111	10	9%	20	18%	39	35%	16	14%	26	23%	81	73%
General Education Students	125,967	30,762	24%	18,415	15%	41,955	33%	12,520	10%	22,315	18%	76,790	61%
Students with Disabilities	13,824	8,129	59%	2,185	16%	2,660	19%	422	3%	428	3%	3,510	25%
American Indian or Alaska Native	938	390	42%	169	18%	271	29%	50	5%	58	6%	379	40%
Asian or Native Hawaiian/Other Pacific Islander	19,261	2,675	14%	1,848	10%	5,380	28%	2,394	12%	6,964	36%	14,738	77%
Black or African American	20,179	10,484	52%	3,786	19%	4,585	23%	663	3%	661	3%	5,909	29%
Hispanic or Latino	38,489	16,964	44%	7,138	19%	10,427	27%	1,923	5%	2,037	5%	14,387	37%
White	56,491	7,345	13%	7,076	13%	22,505	40%	7,460	13%	12,105	21%	42,070	74%
Multiracial	4,433	1,033	23%	583	13%	1,447	33%	452	10%	918	21%	2,817	64%
Economically Disadvantaged	73,563	28,919	39%	12,688	17%	20,622	28%	4,571	6%	6,763	9%	31,956	43%
Not Economically Disadvantaged	66,228	9,972	15%	7,912	12%	23,993	36%	8,371	13%	15,980	24%	48,344	73%
English Language Learner	7,741	4,849	63%	1,062	14%	1,294	17%	198	3%	338	4%	1,830	24%
Non-English Language Learner	132,050	34,042	26%	19,538	15%	43,321	33%	12,744	10%	22,405	17%	78,470	59%
In Foster Care	181	102	56%	38	21%	35	19%	1	1%	5	3%	41	23%
Not in Foster Care	139,610	38,789	28%	20,562	15%	44,580	32%	12,941	9%	22,738	16%	80,259	57%
Homeless	5,272	2,897	55%	940	18%	1,038	20%	154	3%	243	5%	1,435	27%
Not Homeless	134,519	35,994	27%	19,660	15%	43,577	32%	12,788	10%	22,500	17%	78,865	59%
Migrant	40	16	40%	9	23%	14	35%	0	0%	1	3%	15	38%
Not Migrant	139,751	38,875	28%	20,591	15%	44,601	32%	12,942	9%	22,742	16%	80,285	57%
Parent in Armed Forces	365	73	20%	49	13%	149	41%	35	10%	59	16%	243	67%
Parent Not in Armed Forces	139,426	38,818	28%	20,551	15%	44,466	32%	12,907	9%	22,684	16%	80,057	57%

ANNUAL REGENTS EXAMINATION IN ALGEBRA II (2023-24)



Subgroup	Tested	Level 1		Level 2		Level 3		Level 4		Level 5		Proficient (Levels 3 & Above)	
		#	%	#	%	#	%	#	%	#	%	#	%
All Students	103,895	16,822	16%	10,151	10%	33,112	32%	23,794	23%	20,016	19%	76,922	74%
Female	53,681	8,632	16%	5,439	10%	17,378	32%	12,353	23%	9,879	18%	39,610	74%
Male	50,125	8,185	16%	4,707	9%	15,705	31%	11,410	23%	10,118	20%	37,233	74%
Non-Binary	89	5	6%	5	6%	29	33%	31	35%	19	21%	79	89%
General Education Students	96,909	13,833	14%	9,088	9%	31,252	32%	23,035	24%	19,701	20%	73,988	76%
Students with Disabilities	6,986	2,989	43%	1,063	15%	1,860	27%	759	11%	315	5%	2,934	42%
American Indian or Alaska Native	645	179	28%	99	15%	221	34%	90	14%	56	9%	367	57%
Asian or Native Hawaiian/Other Pacific Islander	16,971	1,378	8%	1,020	6%	4,150	24%	4,174	25%	6,249	37%	14,573	86%
Black or African American	13,349	4,665	35%	2,293	17%	4,362	33%	1,440	11%	589	4%	6,391	48%
Hispanic or Latino	26,047	7,747	30%	3,857	15%	8,897	34%	3,779	15%	1,767	7%	14,443	55%
White	43,960	2,489	6%	2,603	6%	14,602	33%	13,591	31%	10,675	24%	38,868	88%
Multiracial	2,923	364	12%	279	10%	880	30%	720	25%	680	23%	2,280	78%
Economically Disadvantaged	49,893	12,844	26%	6,664	13%	16,360	33%	8,363	17%	5,662	11%	30,385	61%
Not Economically Disadvantaged	54,002	3,978	7%	3,487	6%	16,752	31%	15,431	29%	14,354	27%	46,537	86%
English Language Learner	3,790	2,116	56%	533	14%	749	20%	246	6%	146	4%	1,141	30%
Non-English Language Learner	100,105	14,706	15%	9,618	10%	32,363	32%	23,548	24%	19,870	20%	75,781	76%
In Foster Care	98	43	44%	22	22%	23	23%	9	9%	1	1%	33	34%
Not in Foster Care	103,797	16,779	16%	10,129	10%	33,089	32%	23,785	23%	20,015	19%	76,889	74%
Homeless	3,448	1,482	43%	520	15%	925	27%	336	10%	185	5%	1,446	42%
Not Homeless	100,447	15,340	15%	9,631	10%	32,187	32%	23,458	23%	19,831	20%	75,476	75%
Migrant	20	7	35%	2	10%	5	25%	3	15%	3	15%	11	55%
Not Migrant	103,875	16,815	16%	10,149	10%	33,107	32%	23,791	23%	20,013	19%	76,911	74%
Parent in Armed Forces	290	39	13%	41	14%	86	30%	83	29%	41	14%	210	72%
Parent Not in Armed Forces	103,605	16,783	16%	10,110	10%	33,026	32%	23,711	23%	19,975	19%	76,712	74%

ANNUAL REGENTS EXAMINATION IN LIVING ENVIRONMENT (2023-24)



Subgroup	Tested	Level 1		Level 2		Level 3		Level 4		Proficient (Levels 3 & 4)	
		#	%	#	%	#	%	#	%	#	%
All Students	225,069	54,719	24%	30,021	13%	87,322	39%	53,007	24%	140,329	62%
Female	109,445	25,903	24%	15,097	14%	42,776	39%	25,669	23%	68,445	63%
Male	115,457	28,807	25%	14,919	13%	44,484	39%	27,247	24%	71,731	62%
Non-Binary	167	9	5%	5	3%	62	37%	91	54%	153	92%
General Education Students	182,356	33,834	19%	22,287	12%	75,601	41%	50,634	28%	126,235	69%
Students with Disabilities	42,713	20,885	49%	7,734	18%	11,721	27%	2,373	6%	14,094	33%
American Indian or Alaska Native	1,608	466	29%	290	18%	641	40%	211	13%	852	53%
Asian or Native Hawaiian/Other Pacific Islander	22,570	2,656	12%	1,746	8%	7,694	34%	10,474	46%	18,168	80%
Black or African American	39,832	15,715	39%	7,118	18%	13,769	35%	3,230	8%	16,999	43%
Hispanic or Latino	73,229	25,439	35%	12,775	17%	27,334	37%	7,681	10%	35,015	48%
White	80,710	9,087	11%	7,286	9%	35,103	43%	29,234	36%	64,337	80%
Multiracial	7,120	1,356	19%	806	11%	2,781	39%	2,177	31%	4,958	70%
Economically Disadvantaged	137,704	44,930	33%	22,756	17%	51,865	38%	18,153	13%	70,018	51%
Not Economically Disadvantaged	87,365	9,789	11%	7,265	8%	35,457	41%	34,854	40%	70,311	80%
English Language Learner	27,809	15,696	56%	4,961	18%	6,360	23%	792	3%	7,152	26%
Non-English Language Learner	197,260	39,023	20%	25,060	13%	80,962	41%	52,215	26%	133,177	68%
In Foster Care	684	309	45%	126	18%	213	31%	36	5%	249	36%
Not in Foster Care	224,385	54,410	24%	29,895	13%	87,109	39%	52,971	24%	140,080	62%
Homeless	13,793	5,963	43%	2,469	18%	4,478	32%	883	6%	5,361	39%
Not Homeless	211,276	48,756	23%	27,552	13%	82,844	39%	52,124	25%	134,968	64%
Migrant	205	89	43%	36	18%	67	33%	13	6%	80	39%
Not Migrant	224,864	54,630	24%	29,985	13%	87,255	39%	52,994	24%	140,249	62%
Parent in Armed Forces	637	103	16%	73	11%	308	48%	153	24%	461	72%
Parent Not in Armed Forces	224,432	54,616	24%	29,948	13%	87,014	39%	52,854	24%	139,868	62%

ANNUAL REGENTS EXAMINATION IN PHYSICAL SETTING/EARTH SCIENCE (2023-24)



Subgroup	Tested	Level 1		Level 2		Level 3		Level 4		Proficient (Levels 3 & 4)	
		#	%	#	%	#	%	#	%	#	%
All Students	136,882	29,058	21%	16,480	12%	50,393	37%	40,951	30%	91,344	67%
Female	67,560	14,570	22%	8,553	13%	25,191	37%	19,246	28%	44,437	66%
Male	69,219	14,479	21%	7,918	11%	25,161	36%	21,661	31%	46,822	68%
Non-Binary	103	9	9%	9	9%	41	40%	44	43%	85	83%
General Education Students	116,230	19,806	17%	13,071	11%	44,138	38%	39,215	34%	83,353	72%
Students with Disabilities	20,652	9,252	45%	3,409	17%	6,255	30%	1,736	8%	7,991	39%
American Indian or Alaska Native	835	237	28%	149	18%	316	38%	133	16%	449	54%
Asian or Native Hawaiian/Other Pacific Islander	12,216	1,334	11%	1,006	8%	3,959	32%	5,917	48%	9,876	81%
Black or African American	18,804	7,680	41%	3,110	17%	6,078	32%	1,936	10%	8,014	43%
Hispanic or Latino	39,229	12,722	32%	6,363	16%	14,395	37%	5,749	15%	20,144	51%
White	61,286	6,222	10%	5,343	9%	24,013	39%	25,708	42%	49,721	81%
Multiracial	4,512	863	19%	509	11%	1,632	36%	1,508	33%	3,140	70%
Economically Disadvantaged	72,350	22,423	31%	11,385	16%	26,664	37%	11,878	16%	38,542	53%
Not Economically Disadvantaged	64,532	6,635	10%	5,095	8%	23,729	37%	29,073	45%	52,802	82%
English Language Learner	9,592	5,618	59%	1,490	16%	2,095	22%	389	4%	2,484	26%
Non-English Language Learner	127,290	23,440	18%	14,990	12%	48,298	38%	40,562	32%	88,860	70%
In Foster Care	272	130	48%	43	16%	78	29%	21	8%	99	36%
Not in Foster Care	136,610	28,928	21%	16,437	12%	50,315	37%	40,930	30%	91,245	67%
Homeless	5,028	2,206	44%	854	17%	1,555	31%	413	8%	1,968	39%
Not Homeless	131,854	26,852	20%	15,626	12%	48,838	37%	40,538	31%	89,376	68%
Migrant	83	24	29%	21	25%	35	42%	3	4%	38	46%
Not Migrant	136,799	29,034	21%	16,459	12%	50,358	37%	40,948	30%	91,306	67%
Parent in Armed Forces	409	49	12%	42	10%	172	42%	146	36%	318	78%
Parent Not in Armed Forces	136,473	29,009	21%	16,438	12%	50,221	37%	40,805	30%	91,026	67%

ANNUAL REGENTS EXAMINATION IN PHYSICAL SETTING/CHEMISTRY (2023-24)



Subgroup	Tested	Level 1		Level 2		Level 3		Level 4		Proficient (Levels 3 & 4)	
		#	%	#	%	#	%	#	%	#	%
All Students	90,336	15,690	17%	15,556	17%	41,263	46%	17,827	20%	59,090	65%
Female	47,206	8,320	18%	8,563	18%	21,518	46%	8,805	19%	30,323	64%
Male	43,051	7,362	17%	6,985	16%	19,701	46%	9,003	21%	28,704	67%
Non-Binary	79	8	10%	8	10%	44	56%	19	24%	63	80%
General Education Students	85,344	13,252	16%	14,604	17%	39,915	47%	17,573	21%	57,488	67%
Students with Disabilities	4,992	2,438	49%	952	19%	1,348	27%	254	5%	1,602	32%
American Indian or Alaska Native	515	159	31%	115	22%	192	37%	49	10%	241	47%
Asian or Native Hawaiian/Other Pacific Islander	15,482	1,466	9%	1,810	12%	6,807	44%	5,399	35%	12,206	79%
Black or African American	10,105	4,035	40%	2,309	23%	3,191	32%	570	6%	3,761	37%
Hispanic or Latino	19,721	6,545	33%	4,374	22%	7,203	37%	1,599	8%	8,802	45%
White	41,721	3,091	7%	6,493	16%	22,568	54%	9,569	23%	32,137	77%
Multiracial	2,792	394	14%	455	16%	1,302	47%	641	23%	1,943	70%
Economically Disadvantaged	39,236	11,091	28%	8,020	20%	15,279	39%	4,846	12%	20,125	51%
Not Economically Disadvantaged	51,100	4,599	9%	7,536	15%	25,984	51%	12,981	25%	38,965	76%
English Language Learner	1,825	1,168	64%	297	16%	304	17%	56	3%	360	20%
Non-English Language Learner	88,511	14,522	16%	15,259	17%	40,959	46%	17,771	20%	58,730	66%
In Foster Care	71	36	51%	13	18%	19	27%	3	4%	22	31%
Not in Foster Care	90,265	15,654	17%	15,543	17%	41,244	46%	17,824	20%	59,068	65%
Homeless	2,168	963	44%	420	19%	644	30%	141	7%	785	36%
Not Homeless	88,168	14,727	17%	15,136	17%	40,619	46%	17,686	20%	58,305	66%
Migrant	16	1	6%	7	44%	7	44%	1	6%	8	50%
Not Migrant	90,320	15,689	17%	15,549	17%	41,256	46%	17,826	20%	59,082	65%
Parent in Armed Forces	226	47	21%	41	18%	111	49%	27	12%	138	61%
Parent Not in Armed Forces	90,110	15,643	17%	15,515	17%	41,152	46%	17,800	20%	58,952	65%

ANNUAL REGENTS EXAMINATION IN PHYSICAL SETTING/PHYSICS (2023-24)



Subgroup	Tested	Level 1		Level 2		Level 3		Level 4		Proficient (Levels 3 & 4)	
		#	%	#	%	#	%	#	%	#	%
All Students	32,629	5,334	16%	3,187	10%	13,171	40%	10,937	34%	24,108	74%
Female	15,104	2,673	18%	1,569	10%	6,329	42%	4,533	30%	10,862	72%
Male	17,507	2,661	15%	1,618	9%	6,837	39%	6,391	37%	13,228	76%
Non-Binary	18	0	0%	0	0%	5	28%	13	72%	18	100%
General Education Students	31,591	4,889	15%	3,095	10%	12,852	41%	10,755	34%	23,607	75%
Students with Disabilities	1,038	445	43%	92	9%	319	31%	182	18%	501	48%
American Indian or Alaska Native	155	58	37%	18	12%	58	37%	21	14%	79	51%
Asian or Native Hawaiian/Other Pacific Islander	8,552	913	11%	662	8%	3,162	37%	3,815	45%	6,977	82%
Black or African American	2,637	1,119	42%	313	12%	900	34%	305	12%	1,205	46%
Hispanic or Latino	4,925	1,626	33%	672	14%	1,811	37%	816	17%	2,627	53%
White	15,464	1,515	10%	1,441	9%	6,896	45%	5,612	36%	12,508	81%
Multiracial	896	103	11%	81	9%	344	38%	368	41%	712	79%
Economically Disadvantaged	12,892	3,328	26%	1,462	11%	4,851	38%	3,251	25%	8,102	63%
Not Economically Disadvantaged	19,737	2,006	10%	1,725	9%	8,320	42%	7,686	39%	16,006	81%
English Language Learner	270	166	61%	22	8%	55	20%	27	10%	82	30%
Non-English Language Learner	32,359	5,168	16%	3,165	10%	13,116	41%	10,910	34%	24,026	74%
In Foster Care	13	7	54%	1	8%	4	31%	1	8%	5	38%
Not in Foster Care	32,616	5,327	16%	3,186	10%	13,167	40%	10,936	34%	24,103	74%
Homeless	500	208	42%	61	12%	134	27%	97	19%	231	46%
Not Homeless	32,129	5,126	16%	3,126	10%	13,037	41%	10,840	34%	23,877	74%
Migrant	3	—	—	—	—	—	—	—	—	—	—
Not Migrant	32,626	—	—	—	—	—	—	—	—	—	—
Parent in Armed Forces	103	14	14%	12	12%	46	45%	31	30%	77	75%
Parent Not in Armed Forces	32,526	5,320	16%	3,175	10%	13,125	40%	10,906	34%	24,031	74%

ANNUAL REGENTS EXAMINATION IN GLOBAL HISTORY & GEOGRAPHY II (2023-24)



Subgroup	Tested	Level 1		Level 2		Level 3		Level 4		Level 5		Proficient (Levels 3 & Above)	
		#	%	#	%	#	%	#	%	#	%	#	%
All Students	200,700	23,838	12%	22,532	11%	66,000	33%	38,241	19%	50,089	25%	154,330	77%
Female	96,624	10,028	10%	10,854	11%	32,819	34%	18,671	19%	24,252	25%	75,742	78%
Male	103,914	13,795	13%	11,672	11%	33,133	32%	19,535	19%	25,779	25%	78,447	75%
Non-Binary	162	15	9%	6	4%	48	30%	35	22%	58	36%	141	87%
General Education Students	164,035	12,864	8%	15,075	9%	53,799	33%	34,514	21%	47,783	29%	136,096	83%
Students with Disabilities	36,665	10,974	30%	7,457	20%	12,201	33%	3,727	10%	2,306	6%	18,234	50%
American Indian or Alaska Native	1,350	246	18%	204	15%	486	36%	231	17%	183	14%	900	67%
Asian or Native Hawaiian/Other Pacific Islander	20,586	990	5%	1,043	5%	4,778	23%	4,372	21%	9,403	46%	18,553	90%
Black or African American	34,103	7,155	21%	5,852	17%	12,785	37%	4,915	14%	3,396	10%	21,096	62%
Hispanic or Latino	60,310	9,732	16%	9,197	15%	23,206	38%	9,976	17%	8,199	14%	41,381	69%
White	77,919	5,076	7%	5,588	7%	22,704	29%	17,431	22%	27,120	35%	67,255	86%
Multiracial	6,432	639	10%	648	10%	2,041	32%	1,316	20%	1,788	28%	5,145	80%
Economically Disadvantaged	116,344	19,256	17%	17,321	15%	43,422	37%	19,189	16%	17,156	15%	79,767	69%
Not Economically Disadvantaged	84,356	4,582	5%	5,211	6%	22,578	27%	19,052	23%	32,933	39%	74,563	88%
English Language Learner	19,259	6,078	32%	4,226	22%	6,777	35%	1,497	8%	681	4%	8,955	46%
Non-English Language Learner	181,441	17,760	10%	18,306	10%	59,223	33%	36,744	20%	49,408	27%	145,375	80%
In Foster Care	543	160	29%	112	21%	188	35%	55	10%	28	5%	271	50%
Not in Foster Care	200,157	23,678	12%	22,420	11%	65,812	33%	38,186	19%	50,061	25%	154,059	77%
Homeless	10,216	2,472	24%	1,874	18%	3,831	38%	1,256	12%	783	8%	5,870	57%
Not Homeless	190,484	21,366	11%	20,658	11%	62,169	33%	36,985	19%	49,306	26%	148,460	78%
Migrant	177	40	23%	39	22%	75	42%	20	11%	3	2%	98	55%
Not Migrant	200,523	23,798	12%	22,493	11%	65,925	33%	38,221	19%	50,086	25%	154,232	77%
Parent in Armed Forces	487	28	6%	38	8%	175	36%	119	24%	127	26%	421	86%
Parent Not in Armed Forces	200,213	23,810	12%	22,494	11%	65,825	33%	38,122	19%	49,962	25%	153,909	77%

ANNUAL REGENTS EXAMINATION IN U.S. HISTORY & GOVERNMENT (FRAMEWORK) (2023-24)



Subgroup	Tested	Level 1		Level 2		Level 3		Level 4		Level 5		Proficient (Levels 3 & Above)	
		#	%	#	%	#	%	#	%	#	%	#	%
All Students	190,580	18,806	10%	22,227	12%	55,943	29%	58,384	31%	35,220	18%	149,547	78%
Female	93,217	7,747	8%	10,423	11%	27,540	30%	29,015	31%	18,492	20%	75,047	81%
Male	97,167	11,053	11%	11,791	12%	28,359	29%	29,302	30%	16,662	17%	74,323	76%
Non-Binary	196	6	3%	13	7%	44	22%	67	34%	66	34%	177	90%
General Education Students	159,849	11,655	7%	15,326	10%	45,450	28%	53,255	33%	34,163	21%	132,868	83%
Students with Disabilities	30,731	7,151	23%	6,901	22%	10,493	34%	5,129	17%	1,057	3%	16,679	54%
American Indian or Alaska Native	1,300	199	15%	183	14%	481	37%	332	26%	105	8%	918	71%
Asian or Native Hawaiian/Other Pacific Islander	21,337	887	4%	1,235	6%	4,410	21%	7,811	37%	6,994	33%	19,215	90%
Black or African American	30,515	5,879	19%	5,771	19%	10,520	34%	6,453	21%	1,892	6%	18,865	62%
Hispanic or Latino	55,416	7,726	14%	8,977	16%	19,527	35%	14,306	26%	4,880	9%	38,713	70%
White	76,668	3,677	5%	5,557	7%	19,466	25%	27,831	36%	20,137	26%	67,434	88%
Multiracial	5,344	438	8%	504	9%	1,539	29%	1,651	31%	1,212	23%	4,402	82%
Economically Disadvantaged	105,749	14,869	14%	16,683	16%	35,960	34%	27,533	26%	10,704	10%	74,197	70%
Not Economically Disadvantaged	84,831	3,937	5%	5,544	7%	19,983	24%	30,851	36%	24,516	29%	75,350	89%
English Language Learner	15,258	4,242	28%	3,446	23%	5,435	36%	1,900	12%	235	2%	7,570	50%
Non-English Language Learner	175,322	14,564	8%	18,781	11%	50,508	29%	56,484	32%	34,985	20%	141,977	81%
In Foster Care	471	126	27%	90	19%	164	35%	76	16%	15	3%	255	54%
Not in Foster Care	190,109	18,680	10%	22,137	12%	55,779	29%	58,308	31%	35,205	19%	149,292	79%
Homeless	8,607	1,879	22%	1,717	20%	2,947	34%	1,628	19%	436	5%	5,011	58%
Not Homeless	181,973	16,927	9%	20,510	11%	52,996	29%	56,756	31%	34,784	19%	144,536	79%
Migrant	120	14	12%	27	23%	47	39%	22	18%	10	8%	79	66%
Not Migrant	190,460	18,792	10%	22,200	12%	55,896	29%	58,362	31%	35,210	18%	149,468	78%
Parent in Armed Forces	449	32	7%	39	9%	119	27%	172	38%	87	19%	378	84%
Parent Not in Armed Forces	190,131	18,774	10%	22,188	12%	55,824	29%	58,212	31%	35,133	18%	149,169	78%

TOTAL COHORT REGENTS EXAMINATION RESULTS

A High School Cohort consists of all students who first enter grade 9 anywhere or, in the case of ungraded students with disabilities, reach their seventeenth birthday in a particular school year (July 1 - June 30). The "year" used to identify the cohort is the year in which the July 1 - December 31 dates fall. Results are reported four years after these students first enter grade 9.

Due to COVID-19 and changes to New York State testing requirements, Regents examinations in June 2020 through January 2022 were canceled, with the exception of the June 2021 Regents Examinations in ELA, Algebra I, Living Environment, and Physical Setting/Earth Science. The U.S. History & Government examination from June 2022 through January 2023 was also canceled.

2020 TOTAL COHORT REGENTS IN ELA



Subgroup	Cohort	Not Tested		Tested		Level 1		Level 2		Level 3		Level 4 & Above		Proficient (Levels 3 & Above)	
		#	%	#	%	#	%	#	%	#	%	#	%	#	%
All Students	199,126	18,378	9%	180,748	91%	9,024	5%	16,112	8%	44,391	22%	111,221	56%	155,612	78%
Female	96,533	7,447	8%	89,086	92%	3,364	3%	6,676	7%	20,100	21%	58,946	61%	79,046	82%
Male	102,421	10,925	11%	91,496	89%	5,656	6%	9,425	9%	24,264	24%	52,151	51%	76,415	75%
Non-Binary	172	6	3%	166	97%	4	2%	11	6%	27	16%	124	72%	151	88%
General Education Students	164,049	10,828	7%	153,221	93%	4,929	3%	9,820	6%	34,424	21%	104,048	63%	138,472	84%
Students with Disabilities	35,077	7,550	22%	27,527	78%	4,095	12%	6,292	18%	9,967	28%	7,173	20%	17,140	49%
American Indian or Alaska Native	1,359	174	13%	1,185	87%	77	6%	154	11%	348	26%	606	45%	954	70%
Asian or Native Hawaiian/Other Pacific Islander	20,348	915	4%	19,433	96%	530	3%	939	5%	3,051	15%	14,913	73%	17,964	88%
Black or African American	32,694	4,922	15%	27,772	85%	2,177	7%	3,690	11%	9,664	30%	12,241	37%	21,905	67%
Hispanic or Latino	57,569	7,002	12%	50,567	88%	4,196	7%	6,209	11%	15,408	27%	24,754	43%	40,162	70%
White	82,070	4,839	6%	77,231	94%	1,846	2%	4,749	6%	14,931	18%	55,705	68%	70,636	86%
Multiracial	5,086	526	10%	4,560	90%	198	4%	371	7%	989	19%	3,002	59%	3,991	78%
Economically Disadvantaged	110,353	13,439	12%	96,914	88%	7,044	6%	11,978	11%	29,851	27%	48,041	44%	77,892	71%
Not Economically Disadvantaged	88,773	4,939	6%	83,834	94%	1,980	2%	4,134	5%	14,540	16%	63,180	71%	77,720	88%
English Language Learner	12,322	3,036	25%	9,286	75%	3,407	28%	3,126	25%	2,149	17%	604	5%	2,753	22%
Non-English Language Learner	186,804	15,342	8%	171,462	92%	5,617	3%	12,986	7%	42,242	23%	110,617	59%	152,859	82%
In Foster Care	627	226	36%	401	64%	57	9%	74	12%	137	22%	133	21%	270	43%
Not in Foster Care	198,499	18,152	9%	180,347	91%	8,967	5%	16,038	8%	44,254	22%	111,088	56%	155,342	78%
Homeless	8,952	1,830	20%	7,122	80%	993	11%	1,119	13%	2,405	27%	2,605	29%	5,010	56%
Not Homeless	190,174	16,548	9%	173,626	91%	8,031	4%	14,993	8%	41,986	22%	108,616	57%	150,602	79%
Migrant	121	36	30%	85	70%	16	13%	21	17%	31	26%	17	14%	48	40%
Not Migrant	199,005	18,342	9%	180,663	91%	9,008	5%	16,091	8%	44,360	22%	111,204	56%	155,564	78%
Parent in Armed Forces	391	29	7%	362	93%	6	2%	20	5%	84	21%	252	64%	336	86%
Parent Not in Armed Forces	198,735	18,349	9%	180,386	91%	9,018	5%	16,092	8%	44,307	22%	110,969	56%	155,276	78%

2020 TOTAL COHORT EXEMPTIONS IN ELA

https://data.nysed.gov/essa.php?instid=800000081568&year=2024&createreport=1&StateStatus=1§ion_1003=1&stateProgress=1&EMCore=1... 70/90

Subgroup	Total Exempt	Exempt, Not Tested		Exempt, Tested	
		#	%	#	%
All Students	7,836	3,710	47	4,126	53
Female	4,037	1,831	45	2,206	55
Male	3,798	1,879	49	1,919	51
Non-Binary	1	0	0	1	100
General Education Students	6,692	3,048	46	3,644	54
Students with Disabilities	1,144	662	58	482	42
American Indian or Alaska Native	117	51	44	66	56
Asian or Native Hawaiian/Other Pacific Islander	1,162	255	22	907	78
Black or African American	2,934	1,629	56	1,305	44
Hispanic or Latino	2,662	1,407	53	1,255	47
White	854	309	36	545	64
Multiracial	107	59	55	48	45
Economically Disadvantaged	5,959	2,886	48	3,073	52
Not Economically Disadvantaged	1,877	824	44	1,053	56
English Language Learner	433	304	70	129	30
Non-English Language Learner	7,403	3,406	46	3,997	54
In Foster Care	34	24	71	10	29
Not in Foster Care	7,802	3,686	47	4,116	53
Homeless	584	335	57	249	43
Not Homeless	7,252	3,375	47	3,877	53
Not Migrant	7,836	3,710	47	4,126	53
Parent in Armed Forces	4	2	50	2	50
Parent Not in Armed Forces	7,832	3,708	47	4,124	53

See report card Glossary and Guide for criteria used to include students in this table.

2020 TOTAL COHORT REGENTS IN MATH



Subgroup	Cohort	Not Tested		Tested		Level 1		Level 2		Level 3		Level 4 & Above		Proficient (Levels 3 & Above)	
		#	%	#	%	#	%	#	%	#	%	#	%	#	%
All Students	199,126	43,586	22%	155,540	78%	33,132	17%	26,012	13%	53,068	27%	43,328	22%	96,396	48%
Female	96,533	19,502	20%	77,031	80%	16,073	17%	12,412	13%	26,755	28%	21,791	23%	48,546	50%
Male	102,421	24,046	23%	78,375	77%	17,049	17%	13,582	13%	26,261	26%	21,483	21%	47,744	47%
Non-Binary	172	38	22%	134	78%	10	6%	18	10%	52	30%	54	31%	106	62%
General Education Students	164,049	29,734	18%	134,315	82%	23,854	15%	20,346	12%	47,863	29%	42,252	26%	90,115	55%
Students with Disabilities	35,077	13,852	39%	21,225	61%	9,278	26%	5,666	16%	5,205	15%	1,076	3%	6,281	18%
American Indian or Alaska Native	1,359	283	21%	1,076	79%	325	24%	218	16%	366	27%	167	12%	533	39%
Asian or Native Hawaiian/Other Pacific Islander	20,348	2,032	10%	18,316	90%	1,967	10%	1,661	8%	5,174	25%	9,514	47%	14,688	72%
Black or African American	32,694	10,096	31%	22,598	69%	8,950	27%	4,982	15%	6,647	20%	2,019	6%	8,666	27%
Hispanic or Latino	57,569	16,184	28%	41,385	72%	13,545	24%	9,153	16%	13,421	23%	5,266	9%	18,687	32%
White	82,070	13,775	17%	68,295	83%	7,654	9%	9,330	11%	26,093	32%	25,218	31%	51,311	63%
Multiracial	5,086	1,216	24%	3,870	76%	691	14%	668	13%	1,367	27%	1,144	22%	2,511	49%
Economically Disadvantaged	110,353	29,329	27%	81,024	73%	24,105	22%	16,821	15%	26,494	24%	13,604	12%	40,098	36%
Not Economically Disadvantaged	88,773	14,257	16%	74,516	84%	9,027	10%	9,191	10%	26,574	30%	29,724	33%	56,298	63%
English Language Learner	12,322	4,335	35%	7,987	65%	3,140	25%	2,303	19%	2,170	18%	374	3%	2,544	21%
Non-English Language Learner	186,804	39,251	21%	147,553	79%	29,992	16%	23,709	13%	50,898	27%	42,954	23%	93,852	50%
In Foster Care	627	309	49%	318	51%	140	22%	81	13%	81	13%	16	3%	97	15%
Not in Foster Care	198,499	43,277	22%	155,222	78%	32,992	17%	25,931	13%	52,987	27%	43,312	22%	96,299	49%
Homeless	8,952	3,157	35%	5,795	65%	2,204	25%	1,359	15%	1,713	19%	519	6%	2,232	25%
Not Homeless	190,174	40,429	21%	149,745	79%	30,928	16%	24,653	13%	51,355	27%	42,809	23%	94,164	50%
Migrant	121	36	30%	85	70%	24	20%	15	12%	42	35%	4	3%	46	38%
Not Migrant	199,005	43,550	22%	155,455	78%	33,108	17%	25,997	13%	53,026	27%	43,324	22%	96,350	48%
Parent in Armed Forces	391	78	20%	313	80%	42	11%	51	13%	120	31%	100	26%	220	56%
Parent Not in Armed Forces	198,735	43,508	22%	155,227	78%	33,090	17%	25,961	13%	52,948	27%	43,228	22%	96,176	48%

2020 TOTAL COHORT EXEMPTIONS IN MATH

https://data.nysed.gov/essa.php?instid=800000081568&year=2024&createreport=1&StateStatus=1§ion_1003=1&stateProgress=1&EMCore=1... 73/90

Subgroup	Total Exempt	Exempt, Not Tested		Exempt, Tested	
		#	%	#	%
All Students	148,934	29,757	20	119,177	80
Female	75,015	14,067	19	60,948	81
Male	73,802	15,664	21	58,138	79
Non-Binary	117	26	22	91	78
General Education Students	131,034	22,473	17	108,561	83
Students with Disabilities	17,900	7,284	41	10,616	59
American Indian or Alaska Native	949	174	18	775	82
Asian or Native Hawaiian/Other Pacific Islander	17,427	1,437	8	15,990	92
Black or African American	23,130	7,035	30	16,095	70
Hispanic or Latino	39,157	10,419	27	28,738	73
White	64,556	9,899	15	54,657	85
Multiracial	3,715	793	21	2,922	79
Economically Disadvantaged	76,059	19,457	26	56,602	74
Not Economically Disadvantaged	72,875	10,300	14	62,575	86
English Language Learner	4,186	1,796	43	2,390	57
Non-English Language Learner	144,748	27,961	19	116,787	81
In Foster Care	287	134	47	153	53
Not in Foster Care	148,647	29,623	20	119,024	80
Homeless	4,982	1,727	35	3,255	65
Not Homeless	143,952	28,030	19	115,922	81
Migrant	37	11	30	26	70
Not Migrant	148,897	29,746	20	119,151	80
Parent in Armed Forces	263	37	14	226	86
Parent Not in Armed Forces	148,671	29,720	20	118,951	80

See report card Glossary and Guide for criteria used to include students in this table.

2020 TOTAL COHORT REGENTS IN SCIENCE



Subgroup	Cohort	Not Tested		Tested		Level 1		Level 2		Level 3		Level 4		Proficient (Levels 3 & 4)	
		#	%	#	%	#	%	#	%	#	%	#	%	#	%
All Students	199,126	46,281	23%	152,845	77%	30,268	15%	21,927	11%	64,363	32%	36,287	18%	100,650	51%
Female	96,533	20,835	22%	75,698	78%	15,153	16%	11,315	12%	32,177	33%	17,053	18%	49,230	51%
Male	102,421	25,405	25%	77,016	75%	15,108	15%	10,605	10%	32,125	31%	19,178	19%	51,303	50%
Non-Binary	172	41	24%	131	76%	7	4%	7	4%	61	35%	56	33%	117	68%
General Education Students	164,049	31,820	19%	132,229	81%	21,142	13%	17,886	11%	58,030	35%	35,171	21%	93,201	57%
Students with Disabilities	35,077	14,461	41%	20,616	59%	9,126	26%	4,041	12%	6,333	18%	1,116	3%	7,449	21%
American Indian or Alaska Native	1,359	361	27%	998	73%	303	22%	177	13%	392	29%	126	9%	518	38%
Asian or Native Hawaiian/Other Pacific Islander	20,348	2,745	13%	17,603	87%	2,205	11%	1,898	9%	6,842	34%	6,658	33%	13,500	66%
Black or African American	32,694	11,783	36%	20,911	64%	7,981	24%	4,032	12%	7,268	22%	1,630	5%	8,898	27%
Hispanic or Latino	57,569	18,398	32%	39,171	68%	12,435	22%	7,582	13%	15,031	26%	4,123	7%	19,154	33%
White	82,070	11,779	14%	70,291	86%	6,757	8%	7,732	9%	33,118	40%	22,684	28%	55,802	68%
Multiracial	5,086	1,215	24%	3,871	76%	587	12%	506	10%	1,712	34%	1,066	21%	2,778	55%
Economically Disadvantaged	110,353	32,923	30%	77,430	70%	22,468	20%	13,825	13%	30,800	28%	10,337	9%	41,137	37%
Not Economically Disadvantaged	88,773	13,358	15%	75,415	85%	7,800	9%	8,102	9%	33,563	38%	25,950	29%	59,513	67%
English Language Learner	12,322	5,418	44%	6,904	56%	3,396	28%	1,499	12%	1,863	15%	146	1%	2,009	16%
Non-English Language Learner	186,804	40,863	22%	145,941	78%	26,872	14%	20,428	11%	62,500	33%	36,141	19%	98,641	53%
In Foster Care	627	333	53%	294	47%	127	20%	64	10%	88	14%	15	2%	103	16%
Not in Foster Care	198,499	45,948	23%	152,551	77%	30,141	15%	21,863	11%	64,275	32%	36,272	18%	100,547	51%
Homeless	8,952	3,923	44%	5,029	56%	1,880	21%	1,014	11%	1,789	20%	346	4%	2,135	24%
Not Homeless	190,174	42,358	22%	147,816	78%	28,388	15%	20,913	11%	62,574	33%	35,941	19%	98,515	52%
Migrant	121	38	31%	83	69%	27	22%	21	17%	32	26%	3	2%	35	29%
Not Migrant	199,005	46,243	23%	152,762	77%	30,241	15%	21,906	11%	64,331	32%	36,284	18%	100,615	51%
Parent in Armed Forces	391	69	18%	322	82%	31	8%	21	5%	164	42%	106	27%	270	69%
Parent Not in Armed Forces	198,735	46,212	23%	152,523	77%	30,237	15%	21,906	11%	64,199	32%	36,181	18%	100,380	51%

2020 TOTAL COHORT EXEMPTIONS IN SCIENCE

https://data.nysed.gov/essa.php?instid=800000081568&year=2024&createreport=1&StateStatus=1§ion_1003=1&stateProgress=1&EMCore=1... 76/90

Subgroup	Total Exempt	Exempt, Not Tested		Exempt, Tested	
		#	%	#	%
All Students	159,618	31,264	20	128,354	80
Female	79,602	14,854	19	64,748	81
Male	79,877	16,380	21	63,497	79
Non-Binary	139	30	22	109	78
General Education Students	137,269	23,338	17	113,931	83
Students with Disabilities	22,349	7,926	35	14,423	65
American Indian or Alaska Native	1,047	234	22	813	78
Asian or Native Hawaiian/Other Pacific Islander	17,725	1,925	11	15,800	89
Black or African American	24,168	8,400	35	15,768	65
Hispanic or Latino	41,650	11,831	28	29,819	72
White	70,973	8,075	11	62,898	89
Multiracial	4,055	799	20	3,256	80
Economically Disadvantaged	82,556	22,043	27	60,513	73
Not Economically Disadvantaged	77,062	9,221	12	67,841	88
English Language Learner	4,146	1,792	43	2,354	57
Non-English Language Learner	155,472	29,472	19	126,000	81
In Foster Care	326	152	47	174	53
Not in Foster Care	159,292	31,112	20	128,180	80
Homeless	5,310	2,070	39	3,240	61
Not Homeless	154,308	29,194	19	125,114	81
Migrant	43	9	21	34	79
Not Migrant	159,575	31,255	20	128,320	80
Parent in Armed Forces	284	29	10	255	90
Parent Not in Armed Forces	159,334	31,235	20	128,099	80

See report card Glossary and Guide for criteria used to include students in this table.

2020 TOTAL COHORT REGENTS IN GLOBAL HISTORY & GEOGRAPHY



Subgroup	Cohort	Not Tested		Tested		Level 1		Level 2		Level 3		Level 4 & Above		Proficient (Levels 3 & Above)	
		#	%	#	%	#	%	#	%	#	%	#	%	#	%
All Students	199,126	27,644	14%	171,482	86%	10,968	6%	20,009	10%	65,091	33%	75,414	38%	140,505	71%
Female	96,533	12,422	13%	84,111	87%	4,512	5%	9,703	10%	32,745	34%	37,151	38%	69,896	72%
Male	102,421	15,201	15%	87,220	85%	6,450	6%	10,296	10%	32,291	32%	38,183	37%	70,474	69%
Non-Binary	172	21	12%	151	88%	6	3%	10	6%	55	32%	80	47%	135	78%
General Education Students	164,049	19,081	12%	144,968	88%	5,466	3%	13,055	8%	54,586	33%	71,861	44%	126,447	77%
Students with Disabilities	35,077	8,563	24%	26,514	76%	5,502	16%	6,954	20%	10,505	30%	3,553	10%	14,058	40%
American Indian or Alaska Native	1,359	239	18%	1,120	82%	95	7%	206	15%	478	35%	341	25%	819	60%
Asian or Native Hawaiian/Other Pacific Islander	20,348	2,132	10%	18,216	90%	433	2%	920	5%	4,725	23%	12,138	60%	16,863	83%
Black or African American	32,694	6,566	20%	26,128	80%	3,127	10%	4,986	15%	11,635	36%	6,380	20%	18,015	55%
Hispanic or Latino	57,569	11,011	19%	46,558	81%	4,043	7%	7,517	13%	21,222	37%	13,776	24%	34,998	61%
White	82,070	6,986	9%	75,084	91%	3,027	4%	5,894	7%	25,492	31%	40,671	50%	66,163	81%
Multiracial	5,086	710	14%	4,376	86%	243	5%	486	10%	1,539	30%	2,108	41%	3,647	72%
Economically Disadvantaged	110,353	19,754	18%	90,599	82%	8,418	8%	14,554	13%	39,293	36%	28,334	26%	67,627	61%
Not Economically Disadvantaged	88,773	7,890	9%	80,883	91%	2,550	3%	5,455	6%	25,798	29%	47,080	53%	72,878	82%
English Language Learner	12,322	5,346	43%	6,976	57%	1,806	15%	2,106	17%	2,635	21%	429	3%	3,064	25%
Non-English Language Learner	186,804	22,298	12%	164,506	88%	9,162	5%	17,903	10%	62,456	33%	74,985	40%	137,441	74%
In Foster Care	627	255	41%	372	59%	74	12%	92	15%	159	25%	47	7%	206	33%
Not in Foster Care	198,499	27,389	14%	171,110	86%	10,894	5%	19,917	10%	64,932	33%	75,367	38%	140,299	71%
Homeless	8,952	2,871	32%	6,081	68%	820	9%	1,310	15%	2,695	30%	1,256	14%	3,951	44%
Not Homeless	190,174	24,773	13%	165,401	87%	10,148	5%	18,699	10%	62,396	33%	74,158	39%	136,554	72%
Migrant	121	45	37%	76	63%	12	10%	15	12%	38	31%	11	9%	49	40%
Not Migrant	199,005	27,599	14%	171,406	86%	10,956	6%	19,994	10%	65,053	33%	75,403	38%	140,456	71%
Parent in Armed Forces	391	52	13%	339	87%	10	3%	23	6%	122	31%	184	47%	306	78%
Parent Not in Armed Forces	198,735	27,592	14%	171,143	86%	10,958	6%	19,986	10%	64,969	33%	75,230	38%	140,199	71%

2020 TOTAL COHORT EXEMPTIONS IN GLOBAL HISTORY & GEOGRAPHY

https://data.nysed.gov/essa.php?instid=800000081568&year=2024&createreport=1&StateStatus=1§ion_1003=1&stateProgress=1&EMCore=1... 79/90

Subgroup	Total Exempt	Exempt, Not Tested		Exempt, Tested	
		#	%	#	%
All Students	7,700	6,122	80	1,578	20
Female	3,822	3,053	80	769	20
Male	3,876	3,067	79	809	21
Non-Binary	2	2	100	0	0
General Education Students	6,345	5,066	80	1,279	20
Students with Disabilities	1,355	1,056	78	299	22
American Indian or Alaska Native	80	55	69	25	31
Asian or Native Hawaiian/Other Pacific Islander	825	668	81	157	19
Black or African American	2,214	1,649	74	565	26
Hispanic or Latino	2,448	1,930	79	518	21
White	1,956	1,668	85	288	15
Multiracial	177	152	86	25	14
Economically Disadvantaged	5,207	4,134	79	1,073	21
Not Economically Disadvantaged	2,493	1,988	80	505	20
English Language Learner	550	470	85	80	15
Non-English Language Learner	7,150	5,652	79	1,498	21
In Foster Care	31	25	81	6	19
Not in Foster Care	7,669	6,097	80	1,572	20
Homeless	469	382	81	87	19
Not Homeless	7,231	5,740	79	1,491	21
Migrant	4	4	100	0	0
Not Migrant	7,696	6,118	79	1,578	21
Parent in Armed Forces	3	2	67	1	33
Parent Not in Armed Forces	7,697	6,120	80	1,577	20

See report card Glossary and Guide for criteria used to include students in this table.

2020 TOTAL COHORT REGENTS IN U.S. HISTORY & GOVERNMENT



Subgroup	Cohort	Not Tested		Tested		Level 1		Level 2		Level 3		Level 4 & Above		Proficient (Levels 3 & Above)	
		#	%	#	%	#	%	#	%	#	%	#	%	#	%
All Students	199,126	42,984	22%	156,142	78%	8,452	4%	18,551	9%	46,373	23%	82,766	42%	129,139	65%
Female	96,533	19,995	21%	76,538	79%	3,554	4%	9,146	9%	23,427	24%	40,411	42%	63,838	66%
Male	102,421	22,964	22%	79,457	78%	4,892	5%	9,395	9%	22,919	22%	42,251	41%	65,170	64%
Non-Binary	172	25	15%	147	85%	6	3%	10	6%	27	16%	104	60%	131	76%
General Education Students	164,049	31,264	19%	132,785	81%	4,699	3%	12,340	8%	37,853	23%	77,893	47%	115,746	71%
Students with Disabilities	35,077	11,720	33%	23,357	67%	3,753	11%	6,211	18%	8,520	24%	4,873	14%	13,393	38%
American Indian or Alaska Native	1,359	396	29%	963	71%	93	7%	166	12%	344	25%	360	26%	704	52%
Asian or Native Hawaiian/Other Pacific Islander	20,348	4,495	22%	15,853	78%	399	2%	983	5%	3,429	17%	11,042	54%	14,471	71%
Black or African American	32,694	10,849	33%	21,845	67%	2,519	8%	4,486	14%	8,087	25%	6,753	21%	14,840	45%
Hispanic or Latino	57,569	16,401	28%	41,168	72%	3,289	6%	7,121	12%	15,228	26%	15,530	27%	30,758	53%
White	82,070	9,873	12%	72,197	88%	1,948	2%	5,369	7%	18,143	22%	46,737	57%	64,880	79%
Multiracial	5,086	970	19%	4,116	81%	204	4%	426	8%	1,142	22%	2,344	46%	3,486	69%
Economically Disadvantaged	110,353	31,059	28%	79,294	72%	6,653	6%	13,525	12%	28,363	26%	30,753	28%	59,116	54%
Not Economically Disadvantaged	88,773	11,925	13%	76,848	87%	1,799	2%	5,026	6%	18,010	20%	52,013	59%	70,023	79%
English Language Learner	12,322	5,131	42%	7,191	58%	1,541	13%	2,184	18%	2,701	22%	765	6%	3,466	28%
Non-English Language Learner	186,804	37,853	20%	148,951	80%	6,911	4%	16,367	9%	43,672	23%	82,001	44%	125,673	67%
In Foster Care	627	318	51%	309	49%	58	9%	68	11%	127	20%	56	9%	183	29%
Not in Foster Care	198,499	42,666	21%	155,833	79%	8,394	4%	18,483	9%	46,246	23%	82,710	42%	128,956	65%
Homeless	8,952	3,600	40%	5,352	60%	758	8%	1,182	13%	2,039	23%	1,373	15%	3,412	38%
Not Homeless	190,174	39,384	21%	150,790	79%	7,694	4%	17,369	9%	44,334	23%	81,393	43%	125,727	66%
Migrant	121	48	40%	73	60%	7	6%	17	14%	23	19%	26	21%	49	40%
Not Migrant	199,005	42,936	22%	156,069	78%	8,445	4%	18,534	9%	46,350	23%	82,740	42%	129,090	65%
Parent in Armed Forces	391	60	15%	331	85%	11	3%	22	6%	85	22%	213	54%	298	76%
Parent Not in Armed Forces	198,735	42,924	22%	155,811	78%	8,441	4%	18,529	9%	46,288	23%	82,553	42%	128,841	65%

2020 TOTAL COHORT EXEMPTIONS IN U.S. HISTORY & GOVERNMENT

https://data.nysed.gov/essa.php?instid=800000081568&year=2024&createreport=1&StateStatus=1§ion_1003=1&stateProgress=1&EMCore=1... 82/90

Subgroup	Total Exempt	Exempt, Not Tested		Exempt, Tested	
		#	%	#	%
All Students	20,849	18,793	90	2,056	10
Female	10,703	9,680	90	1,023	10
Male	10,140	9,108	90	1,032	10
Non-Binary	6	5	83	1	17
General Education Students	17,924	16,049	90	1,875	10
Students with Disabilities	2,925	2,744	94	181	6
American Indian or Alaska Native	221	200	90	21	10
Asian or Native Hawaiian/Other Pacific Islander	3,614	3,202	89	412	11
Black or African American	5,658	5,219	92	439	8
Hispanic or Latino	7,173	6,464	90	709	10
White	3,875	3,426	88	449	12
Multiracial	308	282	92	26	8
Economically Disadvantaged	14,801	13,498	91	1,303	9
Not Economically Disadvantaged	6,048	5,295	88	753	12
English Language Learner	1,092	1,029	94	63	6
Non-English Language Learner	19,757	17,764	90	1,993	10
In Foster Care	80	75	94	5	6
Not in Foster Care	20,769	18,718	90	2,051	10
Homeless	1,233	1,126	91	107	9
Not Homeless	19,616	17,667	90	1,949	10
Migrant	6	5	83	1	17
Not Migrant	20,843	18,788	90	2,055	10
Parent in Armed Forces	18	16	89	2	11
Parent Not in Armed Forces	20,831	18,777	90	2,054	10

See report card Glossary and Guide for criteria used to include students in this table.

NEW YORK STATE ENGLISH AS A SECOND LANGUAGE ACHIEVEMENT TEST (2023-24)

New York State English as a Second Language Achievement Tests (NYSESLAT) are administered in grades K through 12 to all English Language Learners (ELLs). ELLs are students who, by reason of foreign birth or ancestry, speak or understand a language other than English and speak or understand little or no English, and require support to become proficient in English and are identified pursuant to Section 154.3 of Commissioner's Regulations.

Grade	Total	Not Tested		Tested		Entering		Emerging		Transitioning		Expanding		Commanding (Proficient)	
	#	#	%	#	%	#	%	#	%	#	%	#	%	#	%
Kindergarten	28,719	1,200	4%	27,519	96%	4,585	17%	4,775	17%	4,001	15%	10,401	38%	3,757	14%
Grade 1	28,290	1,181	4%	27,109	96%	1,693	6%	6,809	25%	7,820	29%	7,643	28%	3,144	12%
Grade 2	29,008	1,068	4%	27,940	96%	3,292	12%	4,986	18%	6,238	22%	9,473	34%	3,951	14%
Grade 3	25,254	1,030	4%	24,224	96%	2,306	10%	4,020	17%	6,643	27%	8,863	37%	2,392	10%
Grade 4	23,360	918	4%	22,442	96%	2,527	11%	3,734	17%	4,387	20%	8,550	38%	3,244	14%
Grade 5	20,289	864	4%	19,425	96%	1,987	10%	3,143	16%	4,088	21%	6,972	36%	3,235	17%
Grade 6	20,711	1,170	6%	19,541	94%	2,677	14%	2,986	15%	3,480	18%	6,340	32%	4,058	21%
Grade 7	18,691	1,013	5%	17,678	95%	1,713	10%	3,322	19%	3,038	17%	6,692	38%	2,913	16%
Grade 8	17,996	1,033	6%	16,963	94%	1,487	9%	3,071	18%	2,710	16%	6,769	40%	2,926	17%
Grade 9	25,530	4,547	18%	20,983	82%	2,727	13%	5,161	25%	4,827	23%	6,892	33%	1,376	7%
Grade 10	20,922	3,300	16%	17,622	84%	1,060	6%	3,300	19%	4,298	24%	6,880	39%	2,084	12%
Grade 11	15,892	2,617	16%	13,275	84%	556	4%	1,821	14%	3,355	25%	5,665	43%	1,878	14%
Grade 12	11,672	3,364	29%	8,308	71%	552	7%	1,078	13%	2,246	27%	3,666	44%	766	9%

NEW YORK STATE ALTERNATE ASSESSMENT (2023-24)

New York State Alternate Assessments (NYSAA) are administered to ungraded students with severe cognitive disabilities whose ages are equivalent to graded students in grades 3 through 8 and high school level.

Grade/Subject	Total	Not Tested		Tested		Level 1		Level 2		Level 3		Level 4		Proficient (Levels 3 & 4)	
	#	#	%	#	%	#	%	#	%	#	%	#	%	#	%
Grade 3 ELA	2,051	346	17%	1,705	83%	136	8%	324	19%	1,126	66%	119	7%	1,245	73%
Grade 3 Math	2,051	345	17%	1,706	83%	226	13%	190	11%	1,176	69%	114	7%	1,290	76%
Grade 4 ELA	2,102	339	16%	1,763	84%	125	7%	151	9%	1,418	80%	69	4%	1,487	84%
Grade 4 Math	2,102	340	16%	1,762	84%	164	9%	160	9%	1,177	67%	261	15%	1,438	82%
Grade 5 ELA	2,186	331	15%	1,855	85%	144	8%	124	7%	1,377	74%	210	11%	1,587	86%
Grade 5 Math	2,186	331	15%	1,855	85%	202	11%	115	6%	1,313	71%	225	12%	1,538	83%
Grade 5 Science	2,186	465	21%	1,721	79%	153	9%	260	15%	1,051	61%	257	15%	1,308	76%
Grade 6 ELA	2,580	339	13%	2,241	87%	114	5%	217	10%	1,657	74%	253	11%	1,910	85%
Grade 6 Math	2,580	338	13%	2,242	87%	275	12%	515	23%	1,013	45%	439	20%	1,452	65%
Grade 7 ELA	2,887	423	15%	2,464	85%	186	8%	247	10%	1,519	62%	512	21%	2,031	82%
Grade 7 Math	2,887	421	15%	2,466	85%	221	9%	201	8%	1,459	59%	585	24%	2,044	83%
Grade 8 ELA	2,949	474	16%	2,475	84%	261	11%	254	10%	1,425	58%	535	22%	1,960	79%
Grade 8 Math	2,949	472	16%	2,477	84%	287	12%	477	19%	1,375	56%	338	14%	1,713	69%
Grade 8 Science	2,949	553	19%	2,396	81%	110	5%	542	23%	1,214	51%	530	22%	1,744	73%
Secondary-Level ELA	19,262	16,788	87%	2,474	13%	148	6%	452	18%	1,524	62%	350	14%	1,874	76%
Secondary-Level Math	19,262	16,777	87%	2,485	13%	184	7%	195	8%	1,608	65%	498	20%	2,106	85%
Secondary-Level Science	19,262	16,836	87%	2,426	13%	144	6%	409	17%	1,164	48%	709	29%	1,873	77%

See report card Glossary and Guide for criteria used to include students in this table.

NATIONAL ASSESSMENT OF EDUCATION PROGRESS (NAEP) RESULTS (2024)

National Assessment of Education Progress (NAEP) are reported for statewide (New York State) and national results only. District- and school-level results are not reported for NAEP.

NEW YORK STATE NAEP GRADE 4

	READING				MATH			
SUBGROUP	BELOW BASIC	BASIC	PROFICIENT	ADVANCED	BELOW BASIC	BASIC	PROFICIENT	ADVANCED
All Students	41%	28%	22%	9%	28%	36%	29%	8%
Students with Disabilities	73%	18%	8%	1%	63%	28%	7%	2%
American Indian/Alaska Native	*	*	*	*	*	*	*	*
Asian/Pacific Islander	26%	25%	30%	19%	14%	26%	40%	20%
Black	55%	29%	13%	3%	44%	39%	15%	2%
Hispanic	51%	27%	16%	6%	39%	38%	20%	3%
White	32%	31%	26%	11%	19%	35%	36%	10%
Two or more races	39%	23%	25%	14%	12%	40%	33%	14%
English Language Learners	79%	17%	3%	0%	59%	29%	12%	1%
Economically Disadvantaged	52%	28%	16%	5%	39%	37%	20%	3%

NEW YORK STATE NAEP GRADE 8

	READING				MATH			
SUBGROUP	BELOW BASIC	BASIC	PROFICIENT	ADVANCED	BELOW BASIC	BASIC	PROFICIENT	ADVANCED
All Students	35%	34%	26%	5%	42%	31%	18%	8%
Students with Disabilities	65%	25%	10%	1%	73%	19%	6%	2%
American Indian/Alaska Native	*	*	*	*	*	*	*	*
Asian/Pacific Islander	17%	32%	38%	13%	19%	24%	30%	27%
Black	42%	37%	19%	2%	56%	28%	13%	2%
Hispanic	47%	32%	19%	2%	59%	29%	10%	2%
White	28%	36%	30%	7%	29%	36%	25%	10%
Two or more races	*	*	*	*	45%	32%	17%	6%
English Language Learners	85%	10%	4%	1%	83%	13%	4%	1%
Economically Disadvantaged	44%	34%	19%	3%	54%	29%	14%	4%

*Reporting standards not met.

NEW YORK STATE NAEP PARTICIPATION RATES

	Grade 4 Participation Rate		Grade 8 Participation Rate	
	READING	MATH	READING	MATH
All Students	89%	89%	79%	81%
Students with Disabilities	85%	91%	87%	93%
English Language Learners	83%	84%	78%	90%

Note: Group values may not sum to 100% due to rounding.

NATIONAL NAEP GRADE 4

SUBGROUP	READING				MATH			
	BELOW BASIC	BASIC	PROFICIENT	ADVANCED	BELOW BASIC	BASIC	PROFICIENT	ADVANCED
All Students	41%	29%	22%	8%	24%	36%	31%	9%
Students with Disabilities	72%	18%	8%	1%	53%	31%	13%	3%
American Indian/Alaska Native	59%	26%	13%	3%	43%	37%	18%	2%
Asian/Pacific Islander	23%	26%	31%	20%	12%	24%	39%	25%
Black	57%	27%	13%	3%	41%	40%	17%	2%
Hispanic	52%	27%	16%	4%	34%	39%	23%	4%
White	30%	31%	28%	11%	14%	35%	39%	12%
Two or more races	37%	29%	24%	10%	20%	36%	33%	11%
English Language Learners	71%	21%	7%	1%	48%	36%	14%	2%
Economically Disadvantaged	53%	28%	16%	4%	35%	40%	22%	3%

NATIONAL NAEP GRADE 8

SUBGROUP	READING				MATH			
	BELOW BASIC	BASIC	PROFICIENT	ADVANCED	BELOW BASIC	BASIC	PROFICIENT	ADVANCED
All Students	34%	37%	25%	4%	41%	32%	19%	8%
Students with Disabilities	67%	25%	8%	1%	75%	18%	5%	2%
American Indian/Alaska Native	45%	38%	16%	1%	60%	29%	9%	3%
Asian/Pacific Islander	17%	30%	40%	13%	18%	26%	28%	29%
Black	48%	36%	15%	1%	63%	27%	8%	2%
Hispanic	45%	36%	17%	1%	55%	30%	12%	2%
White	25%	39%	32%	5%	28%	36%	27%	10%
Two or more races	30%	36%	30%	4%	38%	33%	20%	9%
English Language Learners	71%	25%	5%	0%	77%	18%	4%	1%
Economically Disadvantaged	46%	37%	16%	1%	55%	31%	12%	3%

*Reporting standards not met.

NATIONAL NAEP PARTICIPATION RATES

	Grade 4 Participation Rate		Grade 8 Participation Rate	
	READING	MATH	READING	MATH
All Students	92%	92%	88%	89%
Students with Disabilities	89%	90%	89%	90%
English Language Learners	92%	93%	91%	92%

Note: Group values may not sum to 100% due to rounding.

STAFF QUALIFICATIONS (2023-24)**INEXPERIENCED TEACHERS AND PRINCIPALS**

	TEACHERS			PRINCIPALS		
	Total	# Inexperienced	% Inexperienced	Total	# Inexperienced	% Inexperienced
STATEWIDE	215,701	40,882	19%	5,023	1,789	36%
STATEWIDE HIGH-POVERTY SCHOOLS	48,060	12,707	26%	1,254	512	41%
STATEWIDE LOW-POVERTY SCHOOLS	63,145	8,190	13%	1,229	344	28%

TEACHERS TEACHING OUT OF THEIR SUBJECT OR FIELD OF CERTIFICATION

	Total	TEACHERS TEACHING OUT OF THEIR SUBJECT/FIELD OF CERTIFICATION	
		#	%
STATEWIDE	205,583	18,704	9%
STATEWIDE HIGH-POVERTY SCHOOLS	43,665	9,053	21%
STATEWIDE LOW-POVERTY SCHOOLS	60,759	1,288	2%

TOTAL COHORT GRADUATION RATE (2023-24)

Graduation Rate data are for students who first entered grade 9, four years prior to this reporting year. Graduates are as of August following the close of the reporting year. Click on High School Graduation Rate Data report to see district and state comparisons and to filter on gender, ethnicity, and other student subgroups or by 5- and 6-year graduation rates.

Subgroup	Total Enrolled	GRAD RATE		REGENTS WITH ADVANCED DESIGNATION		REGENTS DIPLOMA		LOCAL DIPLOMA		NON DIPLOMA CRED		STILL ENROLLED		GED TRANSFER		DROPOUT	
		#	%	#	%	#	%	#	%	#	%	#	%	#	%	#	%
All Students	199,129	171,794	86%	65,442	33%	102,048	51%	4,304	2%	889	0%	16,270	8%	1,082	1%	8,996	5%
Female	96,535	85,843	89%	35,315	37%	48,909	51%	1,619	2%	316	0%	6,398	7%	420	0%	3,525	4%
Male	102,422	85,795	84%	30,062	29%	53,053	52%	2,680	3%	573	1%	9,864	10%	660	1%	5,465	5%
Non-binary	172	156	91%	65	38%	86	50%	5	3%	0	0%	8	5%	2	1%	6	3%
General Education Students	164,052	147,697	90%	63,805	39%	82,822	50%	1,070	1%	41	0%	9,183	6%	792	0%	6,275	4%
Students with Disabilities	35,077	24,097	69%	1,637	5%	19,226	55%	3,234	9%	848	2%	7,087	20%	290	1%	2,721	8%
American Indian or Alaska Native	1,359	1,122	83%	281	21%	802	59%	39	3%	11	1%	139	10%	18	1%	67	5%
Asian or Native Hawaiian/Other Pacific Islander	20,348	18,920	93%	11,270	55%	7,513	37%	137	1%	39	0%	955	5%	64	0%	364	2%
Black or African American	32,696	26,322	81%	4,151	13%	20,901	64%	1,270	4%	163	0%	4,319	13%	233	1%	1,633	5%
Hispanic or Latino	57,570	46,110	80%	10,966	19%	33,492	58%	1,652	3%	201	0%	7,123	12%	416	1%	3,688	6%
White	82,070	75,022	91%	37,116	45%	36,811	45%	1,095	1%	450	1%	3,321	4%	319	0%	2,927	4%
Multiracial	5,086	4,298	85%	1,658	33%	2,529	50%	111	2%	25	0%	413	8%	32	1%	317	6%
Economically Disadvantaged	110,356	89,733	81%	22,157	20%	64,280	58%	3,296	3%	686	1%	12,195	11%	831	1%	6,842	6%
Not Economically Disadvantaged	88,773	82,061	92%	43,285	49%	37,768	43%	1,008	1%	203	0%	4,075	5%	251	0%	2,154	2%
English Language Learner	12,322	6,375	52%	157	1%	5,349	43%	869	7%	110	1%	3,781	31%	132	1%	1,915	16%
Non-English Language Learner	186,807	165,419	89%	65,285	35%	96,699	52%	3,435	2%	779	0%	12,489	7%	950	1%	7,081	4%
In Foster Care	627	314	50%	16	3%	274	44%	24	4%	6	1%	180	29%	14	2%	109	17%
Not in Foster Care	198,502	171,480	86%	65,426	33%	101,774	51%	4,280	2%	883	0%	16,090	8%	1,068	1%	8,887	4%
Homeless	8,952	6,092	68%	734	8%	5,009	56%	349	4%	42	0%	1,669	19%	96	1%	1,043	12%
Not Homeless	190,177	165,702	87%	64,708	34%	97,039	51%	3,955	2%	847	0%	14,601	8%	986	1%	7,953	4%
Migrant	121	68	56%	3	2%	63	52%	2	2%	1	1%	20	17%	0	0%	32	26%
Not Migrant	199,008	171,726	86%	65,439	33%	101,985	51%	4,302	2%	888	0%	16,250	8%	1,082	1%	8,964	5%

https://data.nysed.gov/essa.php?instid=800000081568&year=2024&createreport=1&StateStatus=1§ion_1003=1&stateProgress=1&EMCore=1... 89/90

Subgroup	Total Enrolled	GRAD RATE		REGENTS WITH ADVANCED DESIGNATION		REGENTS DIPLOMA		LOCAL DIPLOMA		NON DIPLOMA CRED		STILL ENROLLED		GED TRANSFER		DROPOUT	
		#	%	#	%	#	%	#	%	#	%	#	%	#	%	#	%
Parent in Armed Forces	391	365	93%	159	41%	203	52%	3	1%	2	1%	15	4%	2	1%	7	2%
Parent Not in Armed Forces	198,738	171,429	86%	65,283	33%	101,845	51%	4,301	2%	887	0%	16,255	8%	1,080	1%	8,989	5%

CIVIL RIGHTS DATA COLLECTION (CRDC) (2021-22)

Civil Right Data Collection (CRDC) data are reported to the United States Department of Education by districts and include data on measures of school quality, climate, and safety as well as enrollment in preschool programs and accelerated coursework to earn postsecondary credit. For more information, visit the Civil Rights Data Collection, Office for Civil Rights.

CRDC Data (18.04 megabytes)

CRDC Glossary and Guide

© COPYRIGHT NEW YORK STATE EDUCATION DEPARTMENT, ALL RIGHTS RESERVED.

THIS DOCUMENT WAS CREATED ON: APRIL 24, 2025, 2:05 PM EST

NYS - Real Property System
County of Erie

Assessor's Report - 2024 - Prior Year File
S495 Exemption Impact Report
School District Summary

RPS221/004/L001
Date/Time - 7/5/2024 09:54:39
Total Assessed Value 2,128,189,205

Equalized Total Assessed Value 9,252,996,543

School District - 146401 Kenmore Union Free

Exemption Code	Exemption Name	Statutory Authority	Number of Exemptions	Total Equalized Value of Exemptions	Percent of Value Exempted
12100	NYS - GENERALLY	RPTL 404(1)	2	145,218	0.00
12370	STATE AUTHORITIES SPECIFIED	RPTL 412	5	40,517,339	0.44
13100	CO - GENERALLY	RPTL 406(1)	51	10,168,263	0.11
13500	TOWN - GENERALLY	RPTL 406(1)	187	581,787,502	6.29
13650	VG - GENERALLY	RPTL 406(1)	22	14,261,957	0.15
13800	SCHOOL DISTRICT	RPTL 408	19	266,100,738	2.88
13850	BOCES	RPTL 408	1	17,717,391	0.19
14000	LOCAL AUTHORITIES SPECIFIED	RPTL 412	3	323,946,086	3.50
14100	USA - GENERALLY	RPTL 400(1)	1	3,021,739	0.03
17650	FACILITIES DEVELOPMENT CORP	MC K UCON L 4413	2	505,217	0.01
18020	MUNICIPAL INDUSTRIAL DEV AGENC	RPTL 412-a	18	148,833,855	1.61
21600	RES OF CLERGY - RELIG CORP OWN	RPTL 462	21	7,583,042	0.08
25110	NONPROF CORP - RELIG(CONST PRO	RPTL 420-a	69	154,836,188	1.67
25120	NONPROF CORP - EDUC(CONST PRO	RPTL 420-a	7	33,738,878	0.36
25130	NONPROF CORP - CHAR (CONST PRO	RPTL 420-a	5	8,584,565	0.09
25210	NONPROF CORP - HOSPITAL	RPTL 420-a	7	171,417,357	1.85
25230	NONPROF CORP - MORALMENTAL IM	RPTL 420-a	38	28,399,564	0.31
25300	NONPROF CORP - SPECIFIED USES	RPTL 420-b	4	35,767,392	0.39
25800	SYSTEM CODE	STATUTORY AUTH NOT DEFINED	1	86,957	0.00
26400	INC VOLUNTEER FIRE CO OR DEPT	RPTL 464(2)	17	23,069,128	0.25
27350	PRIVATELY OWNED CEMETERY LAND	RPTL 446	7	52,781,740	0.57
28110	NOT-FOR-PROFIT HOUSING COMPANY	RPTL 422	3	30,518,695	0.33
28520	NOT-FOR-PROFIT NURSING HOME CO	RPTL 422	2	16,130,000	0.17
41120	ALT VET EX-WAR PERIOD-NON-COMB	RPTL 458-a	1,206	7,547,440	0.08
41124	ALT VET EX-WAR PERIOD-NON-COMB	RPTL 458-a	123	770,103	0.01
41130	ALT VET EX-WAR PERIOD-COMBAT	RPTL 458-a	865	9,026,275	0.10
41134	ALT VET EX-WAR PERIOD-COMBAT	RPTL 458-a	76	793,060	0.01
41140	ALT VET EX-WAR PERIOD-DISABILI	RPTL 458-a	504	10,067,523	0.11
41144	ALT VET EX-WAR PERIOD-DISABILI	RPTL 458-a	53	983,582	0.01
41300	PARAPLEGIC VETS	RPTL 458(3)	1	270,000	0.00
41400	CLERGY	RPTL 460	20	130,440	0.00
41634	VOL/FIRE/AMB	RPTL 466-a	168	3,879,836	0.04
41800	PERSONS AGE 65 OR OVER	RPTL 467	77	7,825,187	0.08

NYS - Real Property System
County of Erie

Assessor's Report - 2024 - Prior Year File
S495 Exemption Impact Report
School District Summary

RPS221/V04/L001
Date/Time - 7/5/2024 09:54:39
Total Assessed Value 2,128,189,205

Equalized Total Assessed Value 9,252,996,543

School District - 146401 Kenmore Union Free

Exemption Code	Exemption Name	Statutory Authority	Number of Exemptions	Total Equalized Value of Exemptions	Percent of Value Exempted
41804	PERSONS AGE 65 OR OVER	RPTL 467	247	11,179,909	0.12
41834	ENHANCED STAR	RPTL 425	5,077	463,449,424	5.01
41854	BASIC STAR 1999-2000	RPTL 425	7,380	251,562,060	2.72
41900	PHYSICALLY DISABLED	RPTL 459	6	88,909	0.00
47594	Mix-use Properties outside NYC	RPTL S485-a	1	5,586,957	0.06
49530	INDUSTRIAL WASTE TREATMENT FAC	RPTL 477	3	12,697,213	0.14
Total Exemptions Exclusive of System Exemptions:					
			16,299	2,755,776,729	29.78
Total System Exemptions:					
			0	0	0.00
Totals:					
			16,299	2,755,776,729	29.78

Values have been equalized using the Uniform Percentage of Value. The Exempt amounts do not take into consideration, payments in lieu of taxes or other payments for municipal services.

Amount, if any, attributable to payments in lieu of taxes: _____